



## Pope SWCD Celebrates 75th Anniversary



Pope Soil and Water Conservation District was recognized in September by the Board of Water and Soil Resources for 75 years of bringing water management and conservation to the people and lands of Pope County 1949-2024. In attendance during this recognition are pictured left to right above: Jeff Hellermann (USDA Natural Resources Conservation Service District Conservationist), Jason Weinerman (Minnesota Board of Water and Soil Resources Board Conservationist), D. Gary Reents (Pope SWCD Board Member), Randy Pederson (Pope SWCD Board Member), Keith Nygaard (Pope SWCD Board Member), Randy Mitteness (Pope SWCD Board Member), Holly Kovarik (Pope SWCD District Manager), Tom Talle (Pope SWCD Board Member), Nicole Brede (Pope SWCD Habitat Resource Specialist), Senator Torrey Westrom, Dave Iverson (City of Glenwood Administrator), Representative Paul Anderson, and Alex Fellbaum (USDA Farm Service Agency Pope and Douglas County Offices Executive Director) Photo Credit: Tim Douglass Pope County Tribune

## Barsness Park Buckthorn Project

Pope SWCD has been working with the City of Glenwood, Glenwood Park Board, Buckthorn Brigade Volunteer group, Ag Inspector and others to focus efforts in the 250 acre public park to treat an invasive plant called buckthorn. **Since 2022, \$150,000 in grant funding has been secured to treat 94 acres in the park.**

The group is now working on a fourth application. The funding is from the Department of Natural Resources Conservation Partner Legacy program. The Buckthorn Brigade is always looking for volunteers interested in helping. This group, along with the City, is focusing on other efforts in the park including using goats for treating certain areas of the park as an example. To learn more or if you have questions on how you can help give us a call at 320-634-5327.



*Pictured above: The Buckthorn Brigade group hosted a tour of the work completed in Barsness Park in the fall of 2024.*

## 2024 Educational Events

Irrigation Clinic (45 participants)

MASWCD Legislative Day

Irrigation Assoc. Annual Meeting & Booth (200 participants)

Outstanding Conservationist Selection

Minnewaska 4th Grade Erosion Presentation (25 participants)

Poster Contest (3 schools, 275 entries)

Stewardship Week (20 churches)

Envirothon (75 participants)

Villard Amelia Leven Lake Association Meeting (40 participants)

BWSR Central Region Subcommittee CRWA Plan

Pope County Fair Booth

Rosholt Field Day (attendance 40)

Pope County Commissioner Program Update

Budget Meeting to County Board

Pope County Commissioner Meeting for Outstanding Conservationist

West Central Minnesota Forest Resource Council Meeting (30 participants)

Pope & Stevens Water Fest (355 participants and 7 schools)

Pope & Stevens Conservation Day (370 participants and 7 schools)

Nitrate Clinic (22 participants)

Brooten Nitrate Clinic (30 Pope Co. participants)

Pope Co. Pheasant Restoration Committee Booth (350 participants)

Gobblers of Glacial Ridge Booth (100 participants)

Middle Sauk Water Fest (434 Participants, 10 schools)

Douglas Co Groundwater Festival (600 participants and 12 schools)

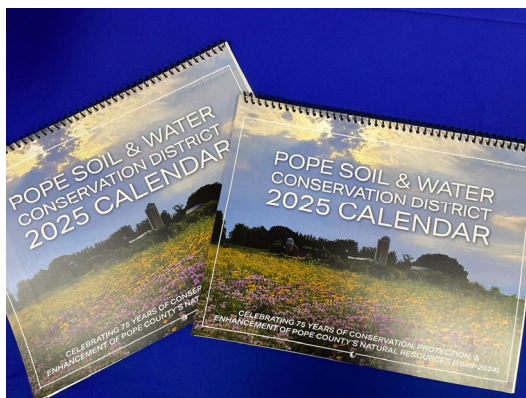
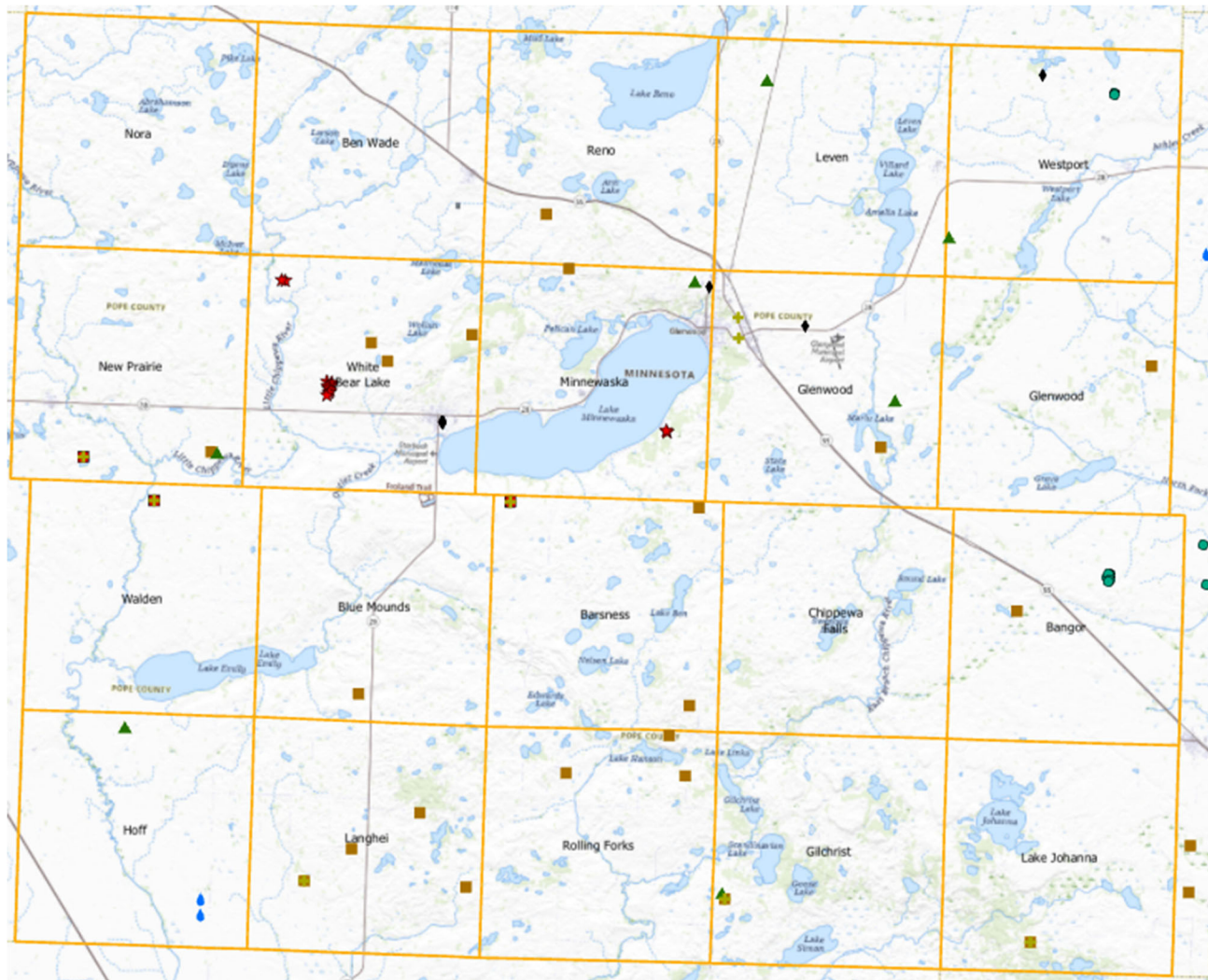
Minnewaska Career Day (100 participants)

Minnewaska Environmental Studies Class (30 participants)



# 2024 Pope SWCD Projects Implemented

Pope SWCD/NRCS continues to work on a variety of practices. The workload remains high and state project funds are potentially available in most areas in Pope County. Pope SWCD coordinates with watershed partners on other special project funds to assist landowners. The NRCS continues to administer federal programs for project implementation. All landowners are encouraged to stop in to visit with staff about funding options. The map below highlights SWCD project workload this past year.



*Pictured: Pope SWCD held its 1st Annual Photo Calendar Contest in 2024.*

Legend		Practice	Count	Acres
●	Alt Intakes	IWM	3	186
★	Erosion Control	Well Sealing	6	
▲	Tree Planting/Weed Fabric	Drill Rentals	23	560
◆	Well Sealings	Tree Planting/WF	9	
◆	IWM	Erosion Control	12	
■	Drill Rentals	Alt. Intake	10	
■	Custom Seeding	Custom Seeding	3	12
■	Grass Sales	Grass Sales	9	155
+	Grass Sales			

 FOLLOW POPE SWCD ON FACEBOOK

# Habitat Programs

Pope SWCD worked with multiple programs that enhance and maintain wildlife habitat areas. These programs are both state and federally funded that have the goal to increase native vegetation cover in the area that can stabilize soil, increase water filtration, and provide wildlife habitat. Programs include Conservation Reserve Enhancement Program (CREP), Conservation Reserve Program (CRP), and Reinvest in Minnesota (RIM). Cover can be considered native grasses, forbs, trees, or wetland sites depending on the resource concern.

Staff assisted our federal partners with CRP Sign-up 61 in **writing 33 Conservation Plans for CRP** located in Pope and Traverse County. These plans were for re-enrollment and new acres across the area. Types of practices enrolled in CRP included Filter Strips, Shelterbelts, Riparian Buffers, Wetland Restorations, and more.

RIM is a state program focused on perpetual lifetime easements of native habitat. Pope SWCD staff **completed 96 RIM site inspections and reported 2 sites that needed to upgrade cover**. Landowners completed lots of work on their RIM easements last year as they worked with our office on adding food plots, haying easements, planting trees, enhancing cover, and ownership changes.

The MN CREP program brought in **17 landowners showing interest in 2024**. We had no new contracts for CREP but there were many questions asked on eligibility and quotes. CREP is best described as a program that is both CRP and RIM. This does require you to have cropping history to get started.

If you are planning to make any changes to a RIM or CREP easement, make sure you are discussing this with our office before making any changes. Also remember to report any new ownership changes to our office as we need an updated copy of the recorded deed. We look forward to continuing our work with habitats across Pope County in the future and if landowners have questions about a program we would like to work with you. Please contact Nicole Brede in our office for assistance.



# Minnesota Ag Water Quality Certification Program



The Minnesota Agriculture Water Quality Certification Program (MAWQCP) is a voluntary certification for farmers that manage their agriculture land with goals towards cleaner water. First benefit to becoming certified is this allows them a funding opportunity for implementing water quality conservation practices. Funding through Minnesota Department of Agriculture (MDA) will provide 75% Cost Share, up to \$5,000 a year for approved practices. Second benefit is to provide recognition for landowners to promote their farm or business and that they are proactive toward clean water. Third benefit is for farmers to have regulatory certainty for any new water quality rules or laws through their certification.

In 2024, Pope SWCD has a total count of **42 landowners certified over 24,245 acres**. We had multiple landowners use their financial assistance funding towards; water quality practices such as rock inlets and cover crop funding for 2024.

The program statewide has 1,569 certified farms and a total of 1,137,314 certified acres. This includes 2,968 new conservation practices installed.

**Financial Assistance funding has been utilized by 21 Pope County landowners. This has totaled \$76,303.64 in cost share for new conservation practices installed.**

If you are interested in becoming certified, have questions about the program, or have questions about your current certification please contact Christopher Borash in our office at 320-634-5327.

## WALK IN ACCESS PROGRAM

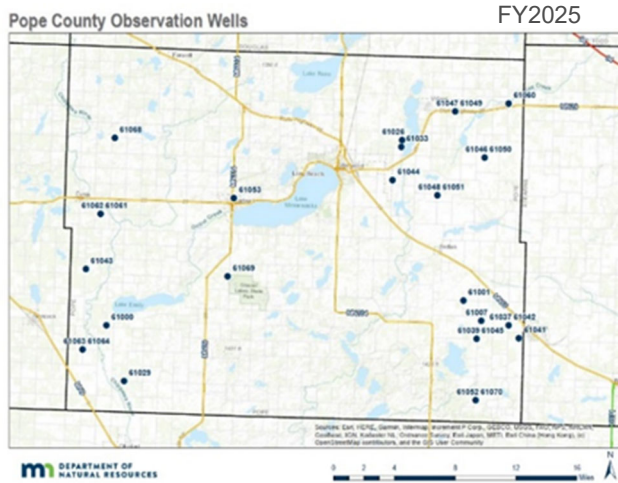


There are not many programs that open land to public hunting, the Walk-In Access (WIA) program is an exception. This program pays landowners to allow public hunting on their land from September – May. The WIA program in Pope County had an active sign-up in 2024. The sign up was from March 4 through April 19, 2024. **Pope SWCD enrolled 4 contracts into the program, with a total of 290 acres** for hunters to enjoy in Pope County. One of these landowners being new to the program added an additional 42 acres from recent years. These sites are in Gilchrist, Langhei, and White Bear Lake Townships.

These WIA sites are maintained by landowners to have native vegetation for wildlife. Landowners receive a payment of \$18 per acre and this can be added on top of already existing CRP payments. Hunting is the ONLY activity allowed on these sites by hunters who have purchased a WIA permit with their hunting license. Any enforcement issues are dealt with by the MN DNR and not with the landowner. WIA sites will be posted with yellow signs by the MN DNR. Contracts with the MN DNR are from 1-3 years. This program is a great opportunity to open your land up to other sportsman in the community.

If anyone is interested in enrolling into the WIA program and opening your land to hunters in need please contact Nicole at 320-634-5327 to learn more.

# OBSERVATION WELL MONITORING PROGRAM



We monitor **29 DNR observation wells located throughout the county four times a year**. Water depth readings are recorded with hand measurements using an electric tape and by data gathered through a pressure transducer data connection cable on each pipe. This data is used to monitor static aquifer or groundwater levels over time. The water levels are reported to the DNR to determine long term trends, assess groundwater resources and to plan for water conservation. There are over 2,000 wells across Minnesota with approximately half of them monitored at any given time. Most DNR observation wells are not used for pumping. The DNR began managing the statewide wells in 1942 and Pope SWCD began participating in this monitoring in 1980. Go to <https://www.dnr.state.mn.us/waters/cgm/program.html> for more info.

# PRECIPITATION MONITORING PROGRAM

Pope County had **13 volunteers participating** in the precipitation monitoring program in 2024. Volunteers fill out a form to record daily rainfall/snowfall precipitation using a rain gauge provided to them. These data are sent to the MN DNR state climatology office and are used to track precipitation throughout the state. This information is used to provide soil moisture/drought conditions and helps to track storm/weather events. We are looking for a volunteer from Reno, Leven, New Prairie, Minnewaska, Walden, Barsness, Bangor, Langhei, Gilchrist and Lake Johanna townships.

For more info on climate: <https://climateapps.dnr.state.mn.us/index.htm>

<http://climate.umn.edu>

If you are interested in becoming a precipitation monitor, please contact the Pope SWCD at 320-634-5327 and ask for Kimberly.



# Irrigation Water Management

Our staff can assist landowners through our Irrigation Water Management program with water appropriation on their irrigated fields. By assisting these landowners with this service, it can save them time and money. Every week through the irrigation season we do field visits and notify the landowner of their fields moisture levels and provide charts that indicate if they should irrigate.

**This year we had 5 irrigation pivots to assist landowners with managing.** This year the rain seemed to be very scattered, and all fields had different weekly needs if they should irrigate or not. Our office will provide this service in 2025 if producers are looking for assistance with their irrigators. Please contact our office for more information at 320-634-5327 and ask for Christopher.

# 2025 SALES PROGRAM ORDER FORM

## POPE SOIL & WATER



**CONSERVATION DISTRICT**  
 1680 Franklin St North, Glenwood, MN 56334  
 PHONE: (320) 634-5327  
[www.popeswcd.org](http://www.popeswcd.org)

FOLLOW POPE SWCD ON FACEBOOK!



Order early for the best selection of trees. We can have shortages of some varieties.  
 You will be notified in April of pick-up dates for trees, tree products, and for grass seed orders.  
 Prices are subject to change.

***Special orders available upon request, call now to secure your order! No project to big or small!***

***Open House scheduled for December 18th with cider and donuts. Come visit with our staff and place your order.***

Name: \_\_\_\_\_

Address: \_\_\_\_\_

City, State Zip: \_\_\_\_\_

Email: \_\_\_\_\_

Day Phone: \_\_\_\_\_

Home Phone: \_\_\_\_\_

ITEM	PRICE	#ORDERED	AMOUNT
<b>SHRUBS (All Bare Root) priced per bundle of 25 Trees</b>			
Buffaloberry	\$50.00		
Chokeberry, black	\$50.00		
Hazlenut	\$50.00		
Hi Bush Cranberry	\$50.00		
Juneberry	\$50.00		
Common Lilac	\$50.00		
Cotoneaster	\$50.00		
Redosier Dogwood	\$50.00		
Sand Cherry	\$50.00		
Villosa Lilac	\$50.00		
<b>LARGE TREES (All Bare Root) priced per bundle of 25 Trees</b>			
Siouxland Cottonwood	\$50.00		
Hackberry	\$50.00		
Bur Oak	\$50.00		
Silver Maple	\$50.00		
Sugar Maple	\$50.00		
American Linden Basswood	\$50.00		
<b>SMALL TREES (All Bare Root) priced per bundle of 25 Trees</b>			
American Plum	\$50.00		
Common Chokecherry	\$50.00		
Red Splendor Crab	\$50.00		
<b>EVERGREENS priced per bundle of 25 Trees</b>			
Black Hills Spruce	\$50.00		
Colorado Blue Spruce	\$50.00		
Ponderosa Pine	\$50.00		
American Arborvitae (White Cedar)	\$50.00		
Red Pine (Norway Pine)	\$50.00		

\*\*Conservation Grade Trees Must Be Ordered in Minimum Quantities of 25 unless otherwise noted.

# Trees Ordered: \_\_\_\_\_

Page Total: \$ \_\_\_\_\_

**See Reverse Side for Tax.**



FOLLOW POPE SWCD ON FACEBOOK

# 2025 SALES PROGRAM ORDER FORM



Last Name: \_\_\_\_\_

ITEM	PRICE	#ORDERED	AMOUNT
<b>POTTED EVERGREENS (other varieties of evergreens available upon request)</b>			
Black Hills Spruce	\$16.50 each		
<b>TREE CARE (Plant Skydd Repellent)</b>			
Plantskydd (deer/rabbit) Repellent (treats 200-300 1' seedlings) 1 lb powder	\$25.00		
Plantskydd (deer/rabbit) Repellent (treats 400-600 1' seedlings) 2.2 lb powder	\$37.00		
Plantskydd (deer/rabbit) Repellent (treats 100 1' seedlings) 1 liter premixed	\$20.00		
<b>TREE CARE</b>			
Tree Shelters 5' height (biodegradeable)	<i>Call for Pricing</i>		
Wood Stakes 5' height	<i>Call for Pricing</i>		
Bulk Roll of Weed Fabric 500'	\$200.00 per roll		
Staples/1000 per box (Anchor Pins)	\$80.00 per box		
<b>SERVICES -- All Services have a \$150.00 one time service charge</b>			
Custom Installed Weed Fabric (fabric included in price)	\$0.60 per foot		
Custom Tree Planting (\$100 minimum charge)	\$0.75 per tree		
Custom Cultivation	<i>Call for Pricing</i>		
Custom Grass Seeding ATV	<i>Call for Pricing</i>		
Custom Grass Seeding No-till Drill	<i>Call for Pricing</i>		
<b>EQUIPMENT RENTALS (Delivery charges do apply)</b>			
Tree Planter (minimum charge of \$50.00)	\$50.00 per day		
No-Till Drill (minimum charge of \$100.00)	\$10.00 per acre		
Packer (minimum charge of \$100.00)	\$2.50 per acre		
Rainbarrels	\$75.00 each		
<b>CUSTOM GRASS SEED MIXES (priced per acre)</b>			
<i>Custom mixes available upon request suited to meet program requirements. Call for a quote 320-634-5327</i>			
<p>*Planning and Design service with on-site visit. (FREE)                      *Trees sold are for conservation purposes only.                      *SWCD cannot guarantee survival rate of trees.                      *SWCD reserves the right to substitute sizes or cancel species due to availability.                      *A <b>25% down payment</b> is required on all orders at the time of the order.                      All orders after March 1st 2025 must be paid in full at the time of the order. All balances due by April 1st, 2025. Orders Cancelled after February 1st, 2025 will be charged a 25% cancellation fee.</p>		<p><b>Total This Side :</b></p> <p><b>Total Front Side :</b></p> <p><b>Subtotal :</b></p> <p><b>7.375% Sales Tax :</b></p> <p><b>Total Order Cost :</b></p> <p><b>Paid :</b></p> <p><b>Balance :</b></p>	

*Pope SWCD prohibits discrimination in all their programs and activities on the basis of color, national origin, sex, religion, age, disability, and where applicable (including gender identity and expression), marital status, parental status, religion, sexual orientation, political beliefs, genetic information, reprisal, or because all or part of an individual's income is derived from any public assistance program.*



# Buffer Program Updates



Minnesota Buffer Law has been around since 2015, requiring perennial vegetation buffers alongside public water. Buffer widths typically average 30ft (50ft buffer with a 30ft minimum) alongside lakes, rivers, streams, and wetland areas that are determined public water. Buffer width of 16.5ft is required alongside public drainage ditches. These buffers are to help filter out nitrogen, phosphorus, sediments, and provide wildlife habitat. If a violation is found the Pope SWCD staff will inform the enforcing agency and the Board of Water and Soil Resources. Depending on site location is who the enforcing entity is. Pope County has 3 possibly enforcing agencies such as, Pope County Land and Resource Management Office, North Fork Crow River Watershed District, or the Sauk River Watershed District. Landowner would then be notified by this enforcing agency and have an 11-month grace period to become compliant with Buffer Law before any fines would start.

The start of 2024 had SWCD staff working on our buffer aerial review with the Pope County Interactive map. Staff reviewed roughly **4,445 parcels and determined 34 parcels needed closer inspection**. Later in the year we had staff re-review the sites in question again and complete 20 site inspections in fall of 2024. Upon the inspections, staff found there to be **6 sites that required flagging and needed to reseed or widen their buffers**.

Important to note that many of the sites that had been flagged were because they had a new renter that was uninformed of the Buffer Law. **Please be neighborly and remind each other of this law going into spring tillage.** If you have questions regarding your buffer, please contact Nicole Brede in our office at 320-634-5327.

## Cooperative Weed Management Program

Since 2008, the Pope and Swift CWMA committee are continuing the fight against invasives species throughout our counties. Both Pope and Swift SWCD and County Ag. Inspectors work to find funding, locate invasives species, educate the public, and put in the hard work at trying to remove them. Wild Parsnip is one of our highest priority species to work against as it had the most concern to humans. In 2024, our group was awarded the Cooperative Weed Management Area Program Grant for \$15,000. Our goal is to have 95 miles of Wild Parsnip treated in road right of ways and protect the encroachment into approximately 4,000 acres of conservation lands. Pope and Swift County Ag. Inspectors scouted areas of high concern for Wild Parsnip and determined where it would be most effective to spray. **In the fall of 2024, contractors treated 19 miles in Swift Co. and 19.5 miles in Pope Co. of road-right of ways.** We plan to continue working with them again in the coming year. If you have questions regarding Wild Parsnip or other invasive species please contact Pope SWCD, Swift SWCD, or your county Ag. Inspector.

## ROSHOLT RESEARCH FARM UPDATES

Nitrogen and water quality research has been an on-going study at the 40-acre Rosholt Research Farm in Westport. The goal is to evaluate the management of nitrogen fertilizers and cover crops in irrigated corn and soybean production and their impacts on water quality.

Another study evaluates the management and interactions between nitrogen fertilizer and irrigation and their impacts on water quality by applying different nitrogen and irrigation rates on corn. A comparison study is happening at the U of M Sand Plain Research Farm in Becker, MN.

Four-foot deep lysimeters are used to extract water from below the root zone in the fields using a vacuum pump. A spectrophotometer machine, which uses light beams to measure a substance's concentration, is used to analyze around 600 water samples for nitrates weekly at Rosholt.

Additional studies included: nitrate analysis from a variable rate irrigation Becker site; nitrous oxide readings and syringe gas sample collection for isotopes at 36 microplots throughout the corn; a nitrification inhibitors study taking nitrous oxide readings from 24 plots; and soil moisture, using a neutron probe, taking various depth moisture readings weekly at 72 access tubes in corn plots.

Rosholt Field Day was held on Aug 15th at the Rosholt farm with around 40 people attending. AgCentric presented on "Conservation Economics", NRCS had a rainfall simulator for infiltration rates and researchers from the U of M covered the two main research trials that were conducted at the farm involving nitrogen, cover crops, and irrigation.

Funding for the work at Rosholt has been funded by the Clean Water Fund as a part of the Clean Water, Land, and Legacy Amendment and the United States Geological Survey (USGS) Water Resources Research Institute Program.

For more information visit [www.legacy.mn.gov/clean-water-fund](http://www.legacy.mn.gov/clean-water-fund). The current partners are listed below for the Research Farm. If you would like to learn more about the farm and research visit our website at [www.popeswcd.org](http://www.popeswcd.org).



*Pictured below left to right: Nitrogen Plots, nitrous oxide isotopic sampling, Rosholt Field Day presentation.*

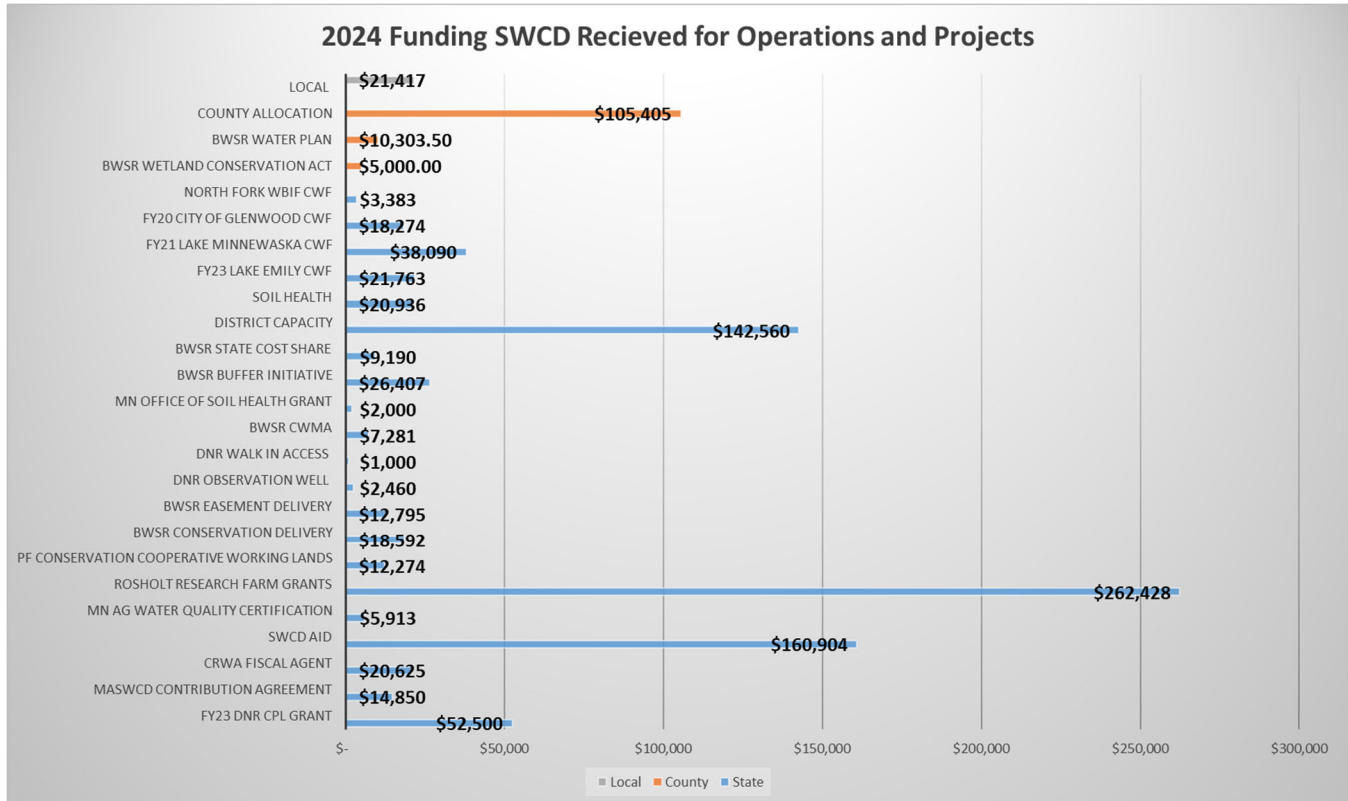


### ROSHOLT RESEARCH FARM PARTNERS:

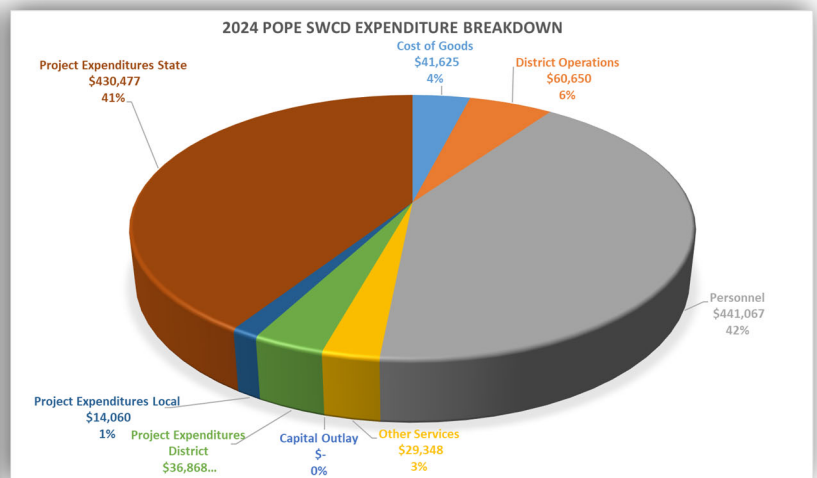
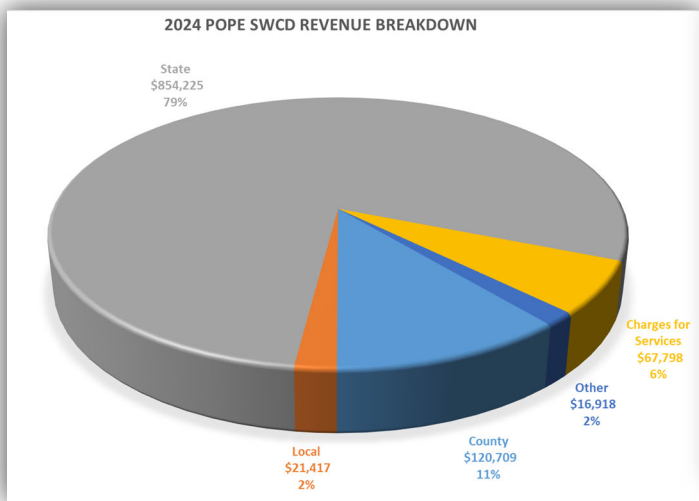


# Unaudited Financial Information

The Pope SWCD is not a taxing authority and depends on funding support from the County and other partners to leverage technical assistance and cost share dollars. The financial information represents all SWCD funding including cost share to landowners. State sources are for landowner projects and cost share assistance. This information does not include federal funding available in cost share to landowners. These financials only reflect funding passed through the SWCD. This financial information is unaudited. The Pope SWCD annually is required to complete an audit. The audited financial statements for 2024 will be made available once the audit is complete.

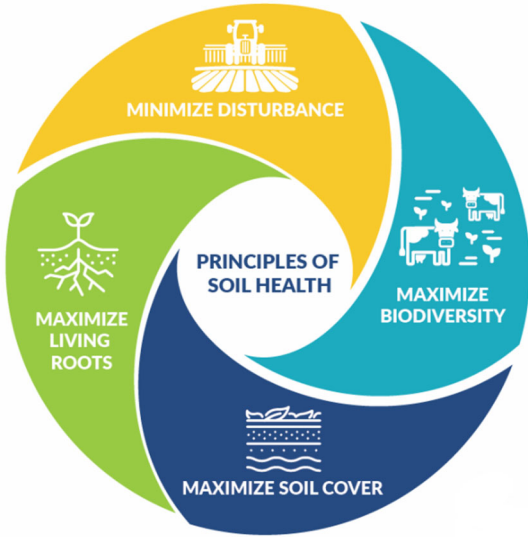


Please note: County Revenue in this bar chart does reflect pass through of state funding for the Wetland Conservation Act and Local Water Plan in the County colored bars. They are reflected as state funding due to their origination.



Please note in chart above: County Revenue in this pie chart does include pass through of state funding for the Wetland Conservation Act and Local Water Plan in the County amount. It is a state source.

# Soil Health Programs



The Pope SWCD in 2024 applied for grant funding to offer cost share for soil health practices and to add additional staff. We applied for funding through the Minnesota Board of Water and Soil Resources (BWSR) and received **2 grants totaling \$560,000**. This funding is from the Clean Water Fund.

Landowners may be eligible for these programs for the following practices: cover crops, pasture and hay planting, residue and tillage management (no-till), tree and shrub establishment, and windbreak and shelterbelt establishment and renovation.

We encourage you to give our office a call to get on our list. It will take time for our staff to plan your conservation practice. These programs provide cost share to implement the practices. We are ready to assist you with your project so give us a call at (320) 634-5327.



## USDA-FSA 2024 Activities:

Conservation Reserve Program Total Rental Payments	\$2,231,793
Conservation Reserve Program new or reenrolled contracts	37

## USDA-NRCS 2024 Activities:

Environmental Quality Incentive Program	11 contracts	1,357 acres	\$545,000
Conservation Stewardship Program	5 contracts	3,939 acres	\$709,000



*This information has been provided by our federal partner agencies on work completed in 2024 and the financial contributions made for programs and projects for the benefit of the citizens in Pope County. They administer additional programs but these are reported here as they do intersect with the work the Pope SWCD is striving to do under the overall water plan activities for the County. We are sharing this information to provide a larger picture of the total work being accomplished to improve and protect our natural resources.*



# NOW HIRING

## Position Announcement:

Watershed Planner and Outreach Coordinator

### APPLICATION PROCEDURE:

SUBMIT A COMPLETED APPLICATION, AND A ONE TO TWO PAGE RESUME AND THREE REFERENCES NO LATER THAN 4:00 P.M. FRIDAY, MARCH 21, 2025. JOB DESCRIPTION AND APPLICATION FORM AVAILABLE ONLINE AT [WWW.POPESWCD.ORG](http://WWW.POPESWCD.ORG).

HOLLY KOVARIK, DISTRICT MANAGER  
POPE SWCD  
1680 FRANKLIN ST NORTH  
GLENWOOD, MN 56334  
[holly.kovarik@mn.nacdnet.net](mailto:holly.kovarik@mn.nacdnet.net)  
320-634-5327 phone

## MEET THE POPE SWCD STAFF



*Holly Kovarik (Manager), Nicole Brede (Habitat Resource Specialist), Christopher Borash (Conservation Technician), Kimberly DeMorett (Resource and Outreach Technician), Mason Stewart (Conservation Technician)*

## Well Sealing Program

In 2024 **six unused wells were sealed**. Pope SWCD has funding available, as cost share assistance, to seal abandoned or non-functioning wells in the county. It is important to seal unused wells as they can pose a physical, health and environmental threat to your family and community. Children and small animals can fall into an unprotected open well. An unused well can allow contaminated water, from surface runoff or improperly disposed waste, a direct pathway into drinking water sources. This can affect you and your neighbors.



Information, applications and instructions are available. Please contact the Pope SWCD at 320-634-5327.

## Construction Project Updates



The Pope SWCD worked with **5 landowners on 22 erosion and sediment control practices in 2024**. The projects included: water and sediment control basins, water quality inlets, and ravine stabilization project. Our workload remains high in this type of work. We have several projects in the design phase.



The Pope SWCD partnered with the Natural Resources Conservation Service to leverage federal funding and engineering assistance. The Pope SWCD also worked with the West Central Technical Service Area Engineering staff to design projects. Funding for these projects were from federal and state sources.

We are able to work with our federal NRCS partners to provide up to 75% overall on the cost of the project that meets our criteria. **Even if you apply for EQIP with NRCS, please reach out to the SWCD in addition to see if you have state funding opportunities available.** You will need to get a release of information form from NRCS so that they can share the information that they have with our office.

If you have an erosion concern on your land please give our office a call to start your project at 320-634-5327 ask for Holly.





# Irrigators Clinic

The annual Irrigators Clinic hosted by Kandiyohi, Pope, Swift, Douglas SWCDs, Stearns CD, the MN Department of Agriculture, and University of Minnesota provides a valuable opportunity for irrigators to learn about irrigation practices, water management, research, and other relevant topics. Whether you're a seasoned irrigator or new to the field, the clinic promises insights and networking opportunities to enhance your irrigation practices.

## EVENT DETAILS:

**Date:** Tuesday, March 25

**Time:** 9:00 AM - 3:00PM

**Location:** Spicer Legion, 155 Lake Ave S., Spicer

**Cost:** FREE to attend

**RSVP:** By March 11 for a meal (includes chicken and meatballs w/sides)



Scan QR code to see full agenda and to register

### \*Topics include:

- Nitrogen Rate and Source for Split-Nitrogen Applications in Irrigated Corn
- Optimizing Irrigation and Nitrogen Management for Sustainable Corn Production in MN
- Irrigation Management Assistant (IMA)
- Minnesota Ag Weather Network Expansion
- Irrigation Regional Conservation Partnership Program
- Soil Moisture Probes 101
- Farmer Panel - Hear from local landowners who are implementing irrigation water management

**\*For more information on this event or to register, call Kandiyohi SWCD at 320-403-4350 or visit [www.kandiyohiswcd.org](http://www.kandiyohiswcd.org).**



# POPE SOIL & WATER



CONSERVATION DISTRICT

1680 Franklin St North  
Glenwood, MN 56334

Pope SWCD and USDA prohibits discrimination in all their programs and activities on the basis of race, color, national origin, age, disability, and where applicable, sex (including gender identity and expression), marital status, familial status, parental status, religion, sexual orientation, political beliefs, genetic information, reprisal, or because all or part of an individual's income is derived from any public assistance program.

## **In This Issue**

- Page 1:** Pope SWCD Celebrates 75th Anniversary / Barsness Park Buckthorn Project
- Page 2:** Education
- Page 3:** 2024 Projects Implemented
- Page 4:** Habitat Programs
- Page 5:** Minnesota Ag Water Quality Certification / Walk In Access
- Page 6:** Observation Well Program/Precipitation Monitoring / Irrigation Water Mgmt.
- Page 7:** Order Form
- Page 8:** Order Form
- Page 9:** Buffer Program/Cooperative Weed Management
- Page 10:** Rosholt Research Farm Update
- Page 11:** Pope SWCD Financial Information
- Page 12:** Soil Health Program/ / USDA Report
- Page 13:** We Are Hiring/ SWCD Staff
- Page 14:** Well Sealing/Construction Projects
- Page 15:** Irrigation Clinic March 25th



FOLLOW POPE SWCD ON FACEBOOK

## **Important Dates**

Board Meetings are held the third Tuesday of each month at 7am. Note exception for February and March below.

February 18	Board Meeting 8 a.m.
March 27	Board Meeting 8 a.m.
April 15	Board Meeting
May 20	Board Meeting



**2025 SWCD BOARD OF SUPERVISORS**

Keith Nygaard, Tom Talle, Randy Pederson, D. Gary Reents, Randy Mitteness