



Pope SWCD Receives State Environmental Excellence Award

Minnesota Erosion Control Association

2021 Environmental Excellence Award

Presented to: Pope Soil and Water Conservation District



Pictured above top photo: Pope SWCD Staff Nicole Brede, Holly Kovarik, Jessica Hoheisel, Kelly Erickson.

Pictured above bottom photo: Pope SWCD Board Keith Nygaard, Tom Talle, Randy Pederson, D. Gary Reents, and Randy Mittenness

We are excited to announce that Pope SWCD is the recipient of the 2021 Minnesota Erosion Control Association (MECA) Environmental Excellence Award. This is for our work over the past several years in the Lake Minnewaska sub watershed project area.

Ross Reiffenberger, West Central Technical Service Area Engineer, nominated Pope SWCD for this award. From his nomination letter, "For years, the Pope SWCD has been working with landowners to educate and install erosion control practices on their land." Since just 2014, \$1,173,300 has been invested in the protection efforts for Lake Minnewaska from the Board of Soil and Water Resources (BWSR) state funded resources including the Clean Water Fund. It should be noted that some projects leveraged federal funding through the Natural Resources Conservation Service which would be in addition to the state funding shown. The SWCD in partnership have implemented 54 practices with 13 new ones in the

planning phase.

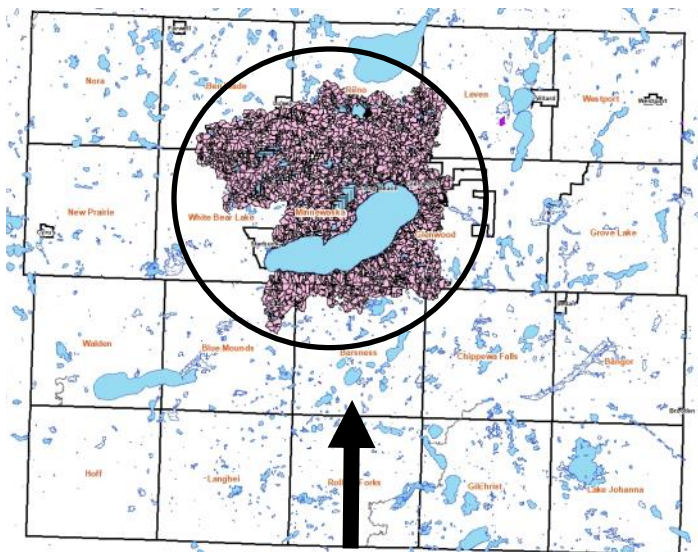
The Pope SWCD is currently working with the City of Glenwood on a major ravine repair project.

Thank you to Ross Reiffenberger and MECA for this recognition. It takes a village to be successful and we are fortunate here in Pope County we have a great community and partners.

To learn more about MECA visit: <https://mnerosion.org/>

To learn more about the Clean Water Fund visit: <https://www.legacy.mn.gov/clean-water-fund>

To learn more about Pope SWCDs work visit our website at <http://www.popeswcd.org>.



Lake Minnewaska Project Area shown above in shaded in area.



FOLLOW POPE SWCD ON FACEBOOK

Reinvest In Minnesota Program



The Reinvest in Minnesota (RIM) perpetual easement program has been available in Pope County for well over two decades, with some of the easements reaching 30 years old. The earlier easements were often seeded to a monoculture of brome or switch grass providing great soil stabilization but did not offer great habitat and food sources for a variety of wildlife.

Over the years landowners have worked with Pope SWCD and the Board of Water and Soil Resources (BWSR) to enhance the vegetative cover to a more natural prairie with at least 3 grass species and 5-15 flower species. Tree practices and food plots may be allowed but require a conservation plan amendment and approval.

Whenever there is a change in ownership it is the responsibility of the landowners to bring in the deed to the Pope SWCD. This allows the easement folder to be up to date and any easement information such as annual site checks and inspections are then sent to the correct landowner.

If you have any questions on your RIM easement, please contact Jessica Hoheisel with the Pope SWCD.



CLEAN WATER FUND GRANTS AWARDED

Pope SWCD will receive 2 new Clean Water Fund grants in 2021 totaling \$580,000 from the Board of Water and Soil Resources.

Pope SWCD has partnered with the Swift SWCD in the East Branch of the Chippewa River sub watershed and will also be working in the Lake Minnewaska sub watershed on projects.

These funds will be used to work with landowners on erosion and sediment control practices.

For more details on the Clean Water Fund visit: <https://www.pca.state.mn.us/water/clean-water-fund>.



Project areas shown above: Lake Minnewaska (Pope Co.) and East Branch of Chippewa River (Pope and Swift counties) Watersheds

Minnesota Ag Water Quality Certification Program

The Minnesota Ag Water Quality Certification Program is a program through the Minnesota Department of Agriculture but assisted by Soil and Water Conservation Districts across the state. Each producer that signs up works one on one with a certification specialist and our Pope SWCD staff. Pope County has 29 certified operations 17,887 acres.

In 2020 Pope County certified a total of 5,119 acres including 11 farm operations.

STATEWIDE INFO

The program statewide has 985 certified farms and a total of 693,092 certified acres

2,048 new conservation practices installed

38,446 tons of sediment saved per year

110,255 tons of soil saved per year

48,565 lbs. of phosphorus save per year



2020 Educational Events

Minnewaska Career Day
1W1P Meeting with Commissioners
MASWCD Area II Meeting Hosted Virtual
Rosholt Family Tour of Farm
Rosholt Virtual Field Day
1 Annual Township Meetings
Stewardship Week
Irrigation Clinic
Regional BWSR Meeting
Budget Appropriation Meeting to County Board

Conservation Reserve Enhancement Program

The Conservation Reserve Enhancement Program (CREP) will have one more batching period for applications in the spring of 2021. The focused practices are Wetland Restorations, Buffers (filter strips), and Wellhead Protection Grass practices.



The CREP Program is a perpetual easement which has grasses, flowers, and restored wetlands on the landscape. It is a combination of the Federal Conservation Reserve Program (CRP) and the State Reinvest in Minnesota (RIM) program. The perpetual RIM easement is acquired, recorded and paid for in a one-time payment, but the CRP payments are over the course of 15 years. If interested in how CREP works and how it may fit your landscape, please contact Nicole Brede at our office.

Work Begins With Stormwater Grant in Glenwood



The Pope SWCD was awarded a City of Glenwood Stormwater grant through the Board of Water and Soil Resources Clean Water Funds competitive grant process to implement water quality projects within city limits. Great progress has been made partnering with the City to construct a ravine stabilization project and seal abandoned public wells.

Have you ever thought about what you as an individual property owner could do to benefit water quality? Individual landowner projects such as rain gardens, bioswales, retention and infiltration ponds, and tree trenches are encouraged. If you have an interest in a stormwater practice in your yard, please contact Jessica Hoheisel. A site survey will be conducted to determine practice feasibility and to design a project. Cost share is available up to 75% of the project cost. To learn more, a raingarden fact sheet was created and can be found on the Pope SWCD website at www.popeswcd.org.

COOPERATIVE WEED MANAGEMENT PROGRAM



Despite the Pope-Swift Cooperative Weed Management Area not having a grant for optimal funding, landowners with technical questions on weed ID and treatment were assisted.

Swift SWCD conducted spot spraying chemical treatment on wild parsnip (pictured to the left). Weed identified locations and the treatments were submitted to the Minnesota Department of Agriculture through the EDDMapS and ISMTrack websites.

Pope SWCD applied for an MDA Noxious Weed grant for 2021. Awards have not yet been announced.

SHORELINE RESTORATION PROGRAM

Several site visits have been conducted regarding shoreline restorations in 2020. Funding needs are high but limited. Shoreline restorations require a resource concern such as active erosion. Simply revegetation to native species is encouraged, but hard to fund a project with state sources.

Pope SWCD can provide technical advice in detailing resources and designs for native shoreline replanting's. If you have concern with your shoreline, please contact the Pope SWCD for a site survey.



WETLAND CONSERVATION ACT UPDATES

Pope SWCD administers the Wetland Conservation Act. In 2020, there were 209 contacts made including 19 official decisions. These decisions included: 5 boundary and type determinations, 2 exemptions, 1 replacement plan, 4 ag bank exemptions, 1 wetland banking site, 5 potential violation investigations, and 1 no-loss application.



2021 SALES PROGRAM ORDER FORM

POPE SOIL & WATER



CONSERVATION DISTRICT
1680 Franklin St North, Glenwood, MN 56334
PHONE: (320) 634-5327



www.popeswcd.org
FOLLOW POPE SWCD ON FACEBOOK!

Name: _____

Address: _____

City, State Zip: _____

Email: _____

Day Phone: _____

Home Phone: _____

Order early for the best selection of trees. We can have shortages of some varieties.

You will be notified in April of pick-up dates for trees, tree products, and for grass seed orders.

Orders received before **December 10th, 2020** for 2021 planting will receive **10% off the tree order.**

Special orders available upon request, call now to secure your order! No project too big or small!

Prices are subject to change.

ITEM	PRICE	#ORDERED	AMOUNT
SHRUBS (All Bare Root) priced per bundle of 25 Trees			
Buffaloberry	\$42.50		
Chokeberry, black	\$42.50		
Hazlenut	\$42.50		
Hi Bush Cranberry	\$42.50	SOLD OUT	
Juneberry	\$42.50	SOLD OUT	
Common Lilac	\$42.50		
Cotoneaster	\$42.50		
Redosier Dogwood	\$42.50		
Sand Cherry	\$42.50		
Villosa Lilac	\$42.50	SOLD OUT	
LARGE TREES (All Bare Root) priced per bundle of 25 Trees			
Siouxland Cottonwood	\$42.50		
Hackberry	\$42.50		
Bur Oak	\$42.50		
Silver Maple	\$42.50		
Sugar Maple	\$42.50		
American Linden Basswood	\$42.50		
SMALL TREES (All Bare Root) priced per bundle of 25 Trees			
American Plum	\$42.50	SOLD OUT	
Common Chokecherry	\$42.50		
Red Splendor Crab	\$42.50		
EVERGREENS priced per bundle of 25 Trees			
Black Hills Spruce	\$45.00		
Colorado Blue Spruce	\$45.00		
Ponderosa Pine	\$45.00		
American Arborvitae (White Cedar)	\$45.00	SOLD OUT	
Red Pine (Norway Pine)	\$45.00		

Trees Ordered: _____

Page Total: \$ _____

See Reverse Side for Tax.

****Conservation Grade Trees Must Be Ordered in Minimum Quantities of 25 unless otherwise noted.**

Pope SWCD provides services including tree planting, grass seeding, mowing, and rental services. They also provide materials for seeding projects and trees. Contact the SWCD for your spring planting and maintenance needs.

2021 SALES PROGRAM ORDER FORM

POPE SOIL & WATER



Last Name: _____

ITEM	PRICE	#ORDERED	AMOUNT
POTTED EVERGREENS (other varieties of evergreens available upon request)			
Black Hills Spruce	\$16.50 each		
TREE CARE (Plant Skydd Repellent)			
Plantskydd (deer/rabbit) Repellent (treats 200-300 1' seedlings) 1 lb powder	\$25.00		
Plantskydd (deer/rabbit) Repellent (treats 400-600 1' seedlings) 2.2 lb powder	\$37.00		
Plantskydd (deer/rabbit) Repellent (treats 100 1' seedlings) 1 liter premixed	\$20.00		
TREE CARE			
Tree Shelters 4' height (biodegradeable)	Call for Pricing		
Wood Stakes 4' height	Call for Pricing		
Weed Control Mats 3x3 w/ 4 staples	\$3.50		
Bulk Roll of Weed Fabric 500'	\$150.00 per roll		
Staples/1000 per box (Anchor Pins)	\$80.00 per box		
SERVICES -- All Services have a \$75.00 one time service charge			
Custom Installed Weed Fabric (fabric included in price)	\$0.60 per foot		
Custom Tree Planting (\$100 minimum charge)	\$0.60 per tree		
Custom Mowing	Call for Pricing		
Custom Cultivation	Call for Pricing		
Custom Grass Seeding ATV	Call for Pricing		
Custom Grass Seeding No-till Drill	Call for Pricing		
EQUIPMENT RENTALS (Delivery charges do apply)			
Tree Planter (minimum charge of \$50.00)	\$50.00 per day		
No-Till Drill (minimum charge of \$75.00)	\$9.00 per acre		
Packer (minimum charge of \$75.00)	\$2.50 per acre		
Rainbarrels	\$65.00 each		
CUSTOM GRASS SEED MIXES (priced per acre)			
Custom mixes available upon request suited to meet program requirements. Call for a quote 320-634-5327			
<p>*Planning and Design service with on-site visit. (FREE)</p> <p>*Trees sold are for conservation purposes only.</p> <p>*SWCD cannot guarantee survival rate of trees.</p> <p>*SWCD reserves the right to substitute sizes or cancel species due to availability.</p> <p>*A 25% down payment is required on all orders at the time of the order.</p> <p>All orders after March 1st 2021 must be paid in full at the time of the order. All balances due by April 1st, 2021. Orders Cancelled after February 1st, 2021 will be charged a 25% cancellation fee.</p> <p>*10% Off Tree Orders sent in by December 10, 2020.</p>		<p>Total This Side :</p> <p>Total Front Side :</p> <p>Subtotal :</p> <p>7.375% Sales Tax :</p> <p>Total Order Cost :</p> <p>Paid :</p> <p>Balance :</p>	

Pope SWCD prohibits discrimination in all their programs and activities on the basis of color, national origin, sex, religion, age, disability, and where applicable (including gender identity and expression), marital status, parental status, religion, sexual orientation, political beliefs, genetic information, reprisal, or because all or part of an individual's income is derived from any public assistance program.

Buffer Program Updates



Five years have past since the passing of the 2015 Minnesota Buffer Law and Pope County had many landowners parcels requiring a buffer compliant before 2017. There were a few parcels that were delayed in implementing due to uncooperative weather and very wet soils; however, landowners pushed through the obstacles and were successful at establishing a buffer.

Continued monitoring through aerial imagery and in field verification checks have been conducted. As of 2020, only 4 in over 7,000 parcels are found to be non-compliant in Pope County. Those that are noncompliant are currently in the enforcement process.

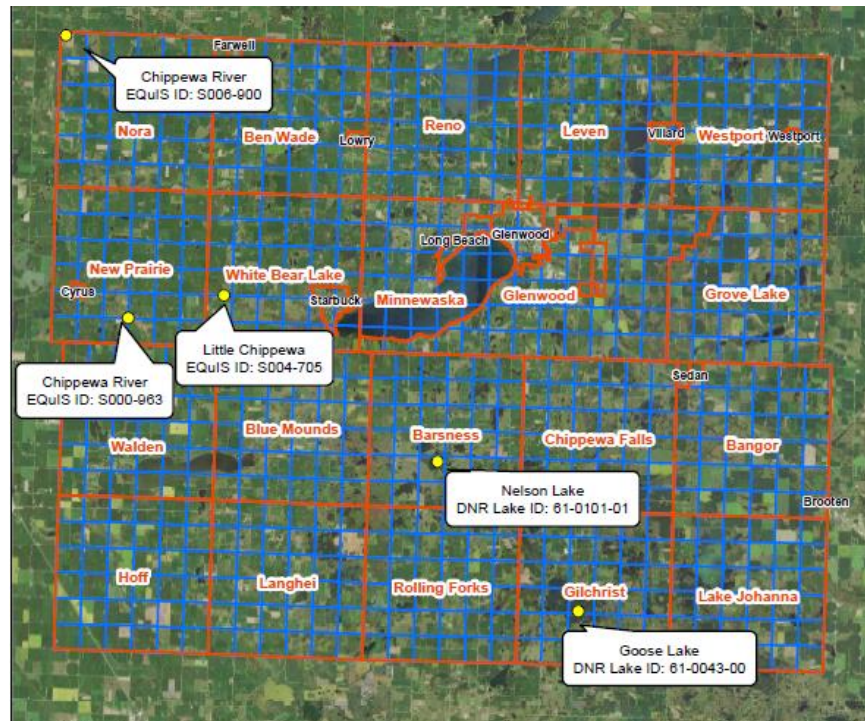
Technical assistance to do alternative practices can be addressed when a landowner makes the request to our office. If you have any buffer questions, please contact Jessica Hoheisel. The DNR Buffer Map can be found online at <http://arcgis.dnr.state.mn.us/gis/buffersviewer/>



Surface Water Assessment Monitoring

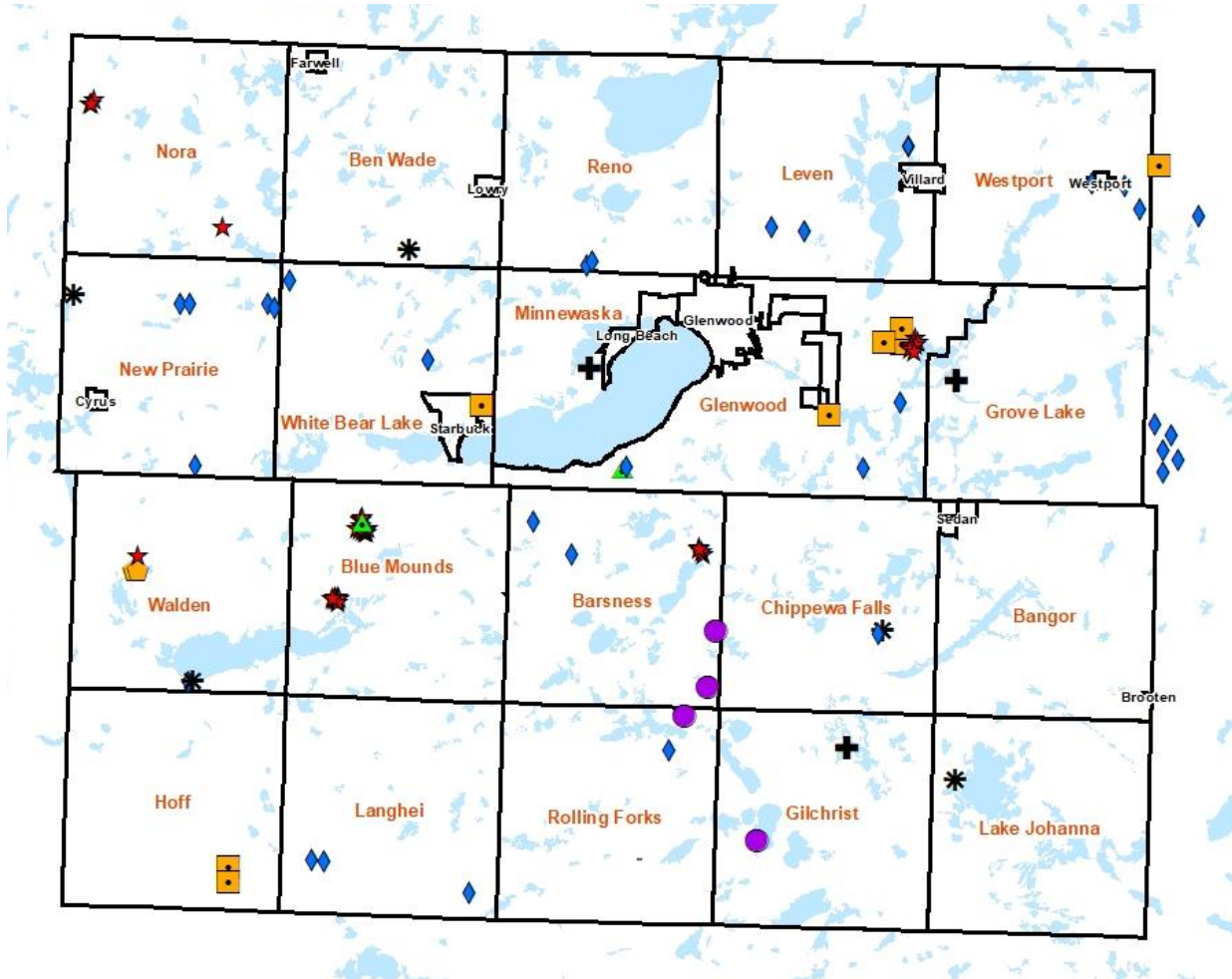
Pope County had three stream locations and two lakes that were monitored for physical and chemical characteristics throughout 2019 and 2020. This was based on a Surface Water Assessment Grant funded through the Minnesota Pollution Control Agency. Nelson Lake and Goose Lake were monitored once per month May-September while stream sites were monitored 2-3 times per month May-September. Water samples were sent to RMB Environmental Laboratories for chemical analysis. The MPCA will conduct data

review over the next several months and will create reports and assessments on the bodies of waters. This will create a baseline for water quality on those lakes and stream segments. If any are found to be impaired the reports could be used as tools to assist in obtaining funding for implementing water quality and soil erosion practices. Stay tune for the Surface Water Assessment reports!



2020 Pope SWCD Projects Implemented

Pope SWCD/NRCS continues to work on a variety of practices. The workload remains high and state project funds are potentially available in the Lake Emily, Lake Minnewaska, East Branch Watershed, and City of Glenwood project areas. In addition, Pope SWCD coordinates with watershed partners on other special project funds to assist landowners. The NRCS continues to administer federal programs for project implementation. All landowners are encouraged to stop in to visit with staff about funding options.



Other SWCD Activities include:

Observation Well Monitoring	25 Wells
Precipitation Monitoring	15 Count
Rosholt Farm Research Facility	40 Acres
CRP 45 Fields/21 contracts	597.46 Acres
Cover Crops (EQIP)	131.9 Acres

Map Legend	Quantity	Symbol
Structures	36 Count	★
Well Sealing	4 Wells Sealed	●
Grass/Drill/Packer/Buffers/Seeding	32 Sites	◆
Mowing	3 Sites	+
Tree Plantings	5 Sites	*
Irrigation Management Service	7 pivots	■
Diversions	2 Count	◼
Grade Stabilization Structure	2 Sites	▲

ROSHOLT RESEARCH FARM HAD BUSY YEAR

A few years ago our office was concerned about continued research opportunities for the Rosholt Research Farm. We held a strategic planning session to pull in partners from across the area and state to brainstorm how we might be able to fully utilize the facility. It is our belief due to the visioning for the farm that we are today having a great amount of success. *(Note: pictures are snapshots of the farm in 2020)*

The Rosholt Research Farm has been in place since the 1960's and is still a relevant site today for Kernza perennial grain, nitrogen fertilizer applications, cover crop and living mulches, and irrigation water management practices research.

A virtual field day event was held in 2020 due to COVID-19 restrictions and was a success with over 100 people participating in the event. If you would like to learn more about the farm and research visit our website at www.popeswcd.org.

Funding for the work at Rosholt has been funded by the Minnesota Environment and Natural Resources Trust Fund as recommended by the Legislative-Citizen Commission on Minnesota Resources (LCCMR) and the Clean Water Fund as a part of the Clean Water, Land, and Legacy Amendment. For more information visit www.lccmr.leg.mn and www.legacy.mn.gov/clean-water-fund.

The current partners are listed below for the Rosholt Research Farm.



**Rosholt
Research Farm
Project Partners**

Stearns County Soil & Water
Conservation District



University of Minnesota
- Forever Green



University of Minnesota



Agricultural Utilization
Research Institute



Pope Soil & Water
Conservation District



Minnesota Department
of Agriculture



USDA-NRCS 2020 Activities:

Environmental Quality Incentive Program	2,570 acres	\$220,000
Conservation Stewardship Program	42,000 acres	\$384,000

USDA-FSA 2020 Activities:

Conservation Reserve Program Total Rental Payments	\$1,890,654
Conservation Reserve Program new or reenrolled contracts	190 count



This information has been provided by our federal partner agencies on work completed in 2020 and the financial contributions made for programs and projects for the benefit of the citizens in Pope County. They administer additional programs but these are reported here as they do intersect with the work the Pope SWCD is striving to do under the overall water plan activities for the County. We are sharing this information to provide a larger picture of the total work being accomplished to improve and protect our natural resources.

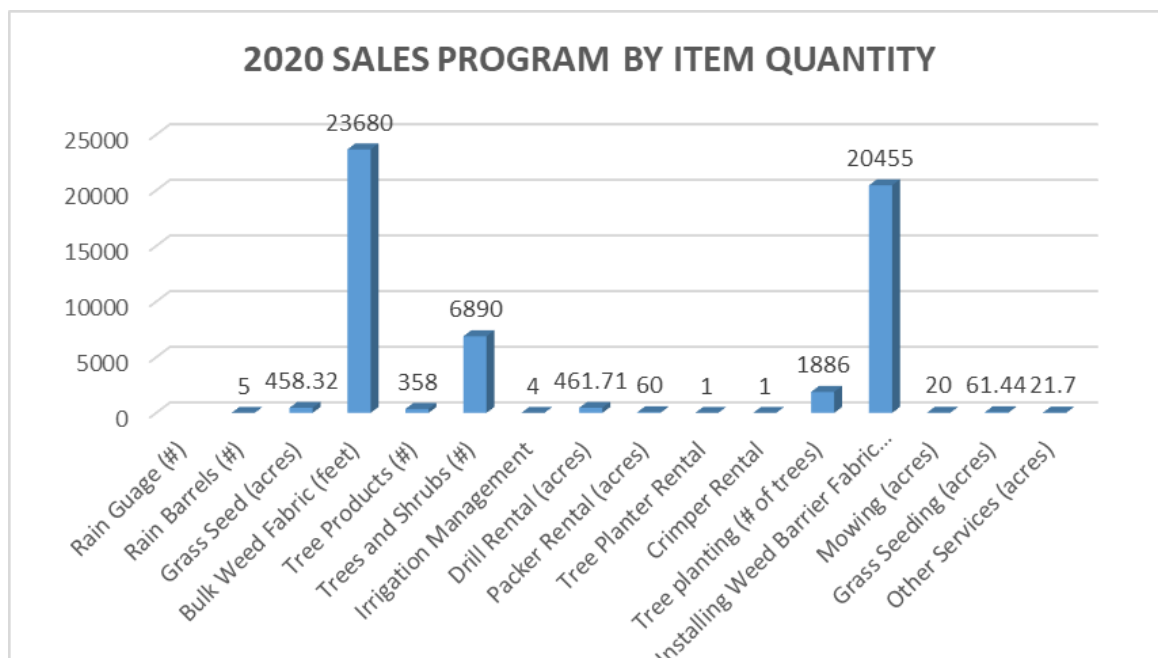
WALK IN ACCESS PROGRAM



The 2020 Walk-In Access (WIA) sign up was very short, going from June 1 through June 12. Our office had 1 landowner accepted into the program enrolling roughly 160 acres. We are excited to keep this program alive in our county as it is a great opportunity for hunters and to keep land in native habitat.

Looking into 2021 there will be a new sign up from March 15 through May 14. Additional news is the increased payment rate to \$18/ acre. Contracts are anywhere from 1 to 3 years with a minimum of 40 acres to enroll. Please consider enrolling if you have native wildlife habitat and are willing to allow the public to hunt. If you have interest in the WIA program contact Nicole Brede in our office.

SALES AND SERVICE PROGRAMS

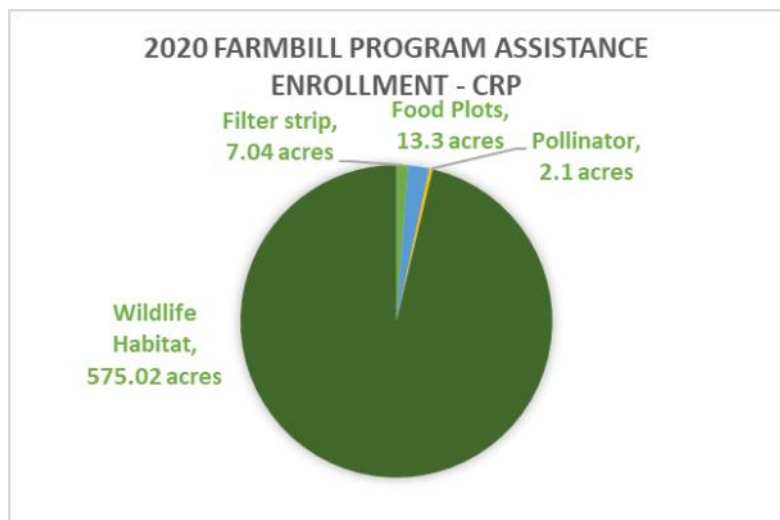


FARMBILL PROGRAM REPORT

Pope SWCD staff assisted the NRCS partners in writing 21 contracts for the Conservation Reserve Program in 2020. This program provides landowners a rental fee for planting native cover on their agriculture land. There are many benefits to this program such as providing habitat for wildlife, filtering water, stabilizing the soil, and more. The graph right shows what conservation practices we worked on and where the largest focus points where.

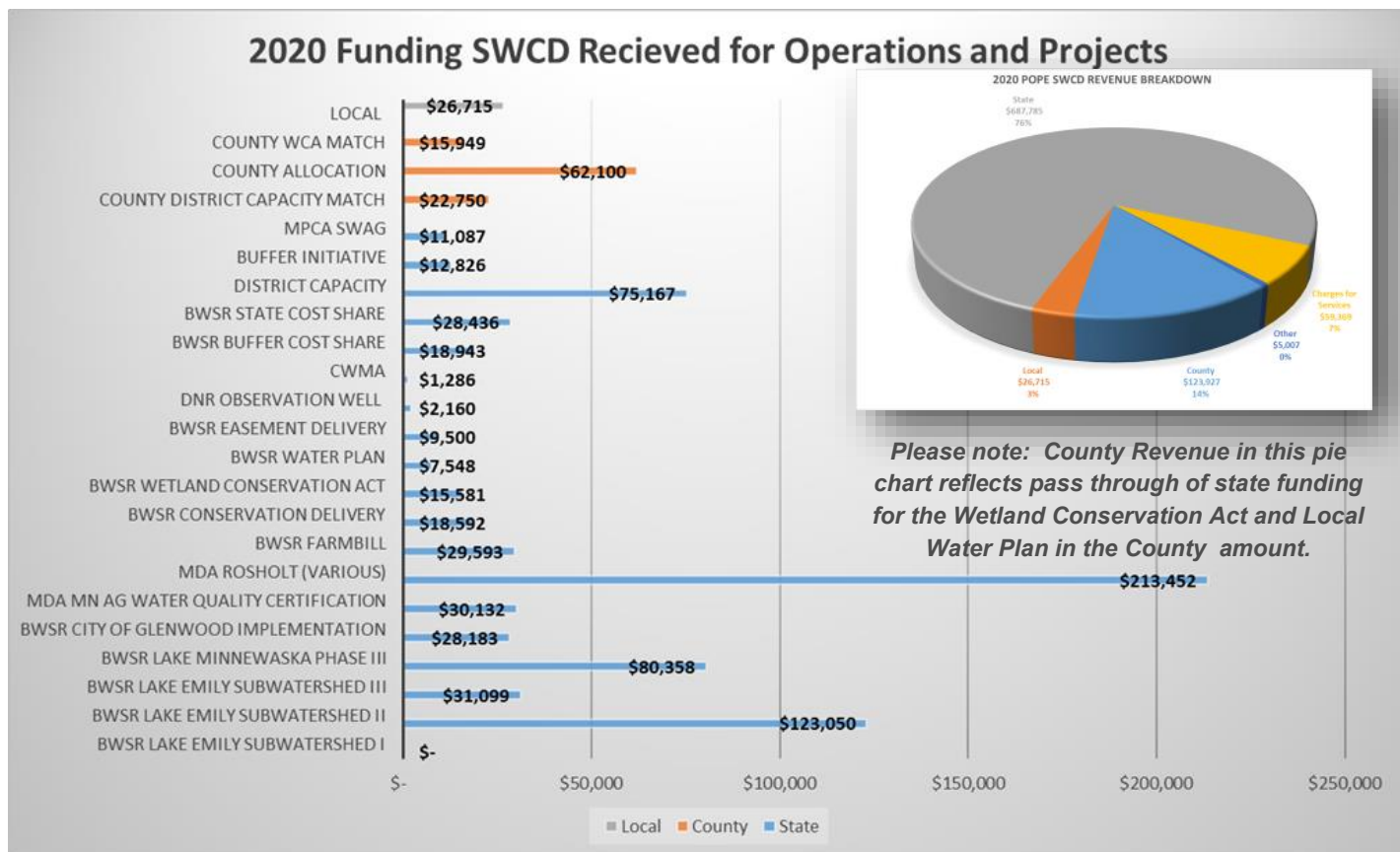
A total of 45 fields were worked on by SWCD staff for 597.6 acres.

Interested in CRP call the FSA office at 320-634-5143

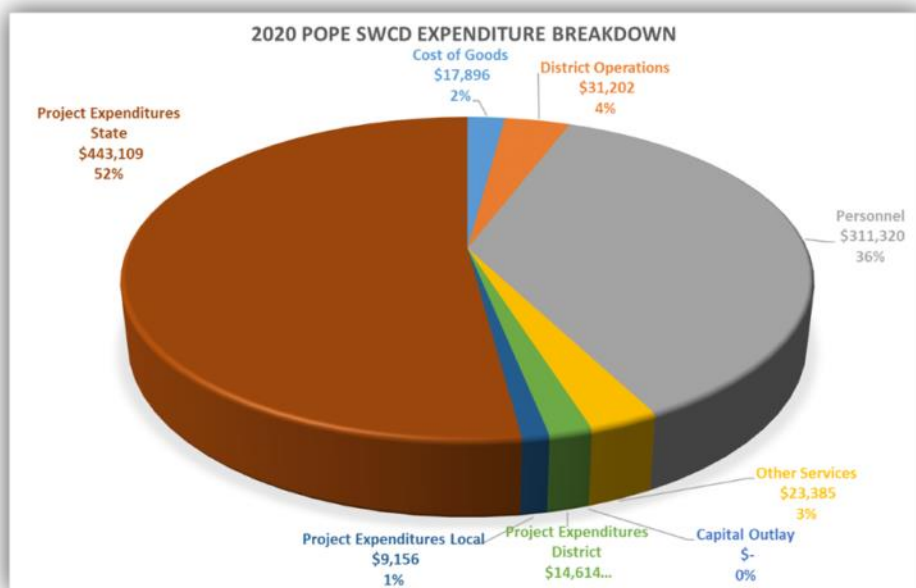


Unaudited Financial Information

The Pope SWCD is not a taxing authority and depends on funding support from the County and other partners to leverage technical assistance and cost share dollars. The financial information represents all SWCD funding including cost share to landowners. State sources are for landowner projects and cost share assistance. This information does not include federal funding available in cost share to landowners. These financials only reflect funding passed through the SWCD. This financial information is unaudited. The Pope SWCD annually is required to complete an audit. The audited financial statements for 2020 will be made available once the audit is complete.



Please note: County Revenue in this bar chart does not reflect pass through of state funding for the Wetland Conservation Act and Local Water Plan in the County colored bars. They are reflected as state funding due to their origination.



Pope SWCD leverages \$13 in funding through state and other sources for every dollar received from the County generated funding. This does not include the work SWCD staff have completed for Federal programs.

POPE SOIL & WATER



CONSERVATION DISTRICT
1680 Franklin St North
Glenwood, MN 56334

Pope SWCD and USDA prohibits discrimination in all their programs and activities on the basis of race, color, national origin, age, disability, and where applicable, sex (including gender identity and expression), marital status, familial status, parental status, religion, sexual orientation, political beliefs, genetic information, reprisal, or because all or part of an individual's income is derived from any public assistance program.

In This Issue



FOLLOW POPE SWCD ON FACEBOOK

- Page 1:** SWCD Receives State Environmental Excellence Award
- Page 2:** RIM/Clean Water Fund Grants/MN Ag Water Quality Certification
- Page 3:** Education/ CREP Program/Stormwater Grant
- Page 4:** Cooperative Weed Management Program/ Shoreline/Wetland Conservation Act
- Page 5&6:** 2021 Tree Order Form
- Page 7:** Buffer/Surface Water Assessment
- Page 8:** 2020 SWCD Projects
- Page 9:** Rosholt/USDA Report
- Page 10:** Walk In Access/Sales Program/Farmbill Program
- Page 11:** 2020 Pope SWCD Financial Information

Important Dates

Board Meetings are held the third
Tuesday of each month at 7am.
The public is welcome to join us.

February 16	Board Meeting
March 17	Board Meeting
April 21	Board Meeting
May 19	Board Meeting



2021 SWCD BOARD OF SUPERVISORS

Keith Nygaard, Tom Talle, Randy Pederson, D. Gary Reents,
Randy Mitteness



SWCD STAFF

Nicole Brede (Technician), Holly Kovarik (Manager), Jessica
Hoheisel (Technician), Kelly Erickson (Technician)