



## Wetland Guidance for Projects

Spring is a wonderful and busy time of year for construction activity. The Pope SWCD each summer has landowners working on projects which may have impacts to wetlands. Did you know that if you are going to do any work in or near a wetland that you need to make sure you are in compliance with the Wetland Conservation Act (WCA).

The Pope SWCD has been the local unit of government responsible for implementing this law locally.

In 1991, the Minnesota Legislature approved the Wetland Conservation Act. The purpose of this legislation was to maintain and protect Minnesota's wetlands and the benefits they provide, and to reach the legislature's goal of no-net-loss of wetlands. The Wetland Conservation Act (WCA) requires anyone proposing to drain, fill, or excavate a wetland to:


1. Try to avoid disturbing the wetland
2. Try to minimize any impact on the wetland
3. To replace any lost wetland acres, functions, and values

There are exemptions from the act, allowing projects with minimal impact or projects located on land where certain pre-established land uses are present to proceed without regulation.


Give our office a call to discuss your next project and to ensure that all work conducted is in compliance with this law at 320-634-5327 ask for Kelly.

If you are a contractor working in wetlands you should have a contractor responsibility form filled out.

More information on this law can be found at <https://bwsr.state.mn.us/wetlands-regulation-minnesota>.



### Landowner Statement and Contractor Responsibility For Work in Wetlands or Public Waters



Minnesota Statutes Sections 103G.2212 and 103G.241 stipulate that an agent or employee of another may not:

- 1) drain, excavate, or fill a wetland, wholly or partially; or
- 2) construct, reconstruct, remove, or make any change in any reservoir, dam, or the course, current, or cross-section of any public water;

unless the agent or employee has obtained a signed statement from the property owner stating that the permit or wetland replacement plan required for the work has been obtained, or that a permit or replacement plan is not required; AND this statement is mailed to the appropriate office with jurisdiction over the wetland or public water prior to initiating the work (see next page for information on where to send the statement).

**This form is a notification only and is not an application for a permit or approval for any activities described in it.**

#### 1. PROJECT INFORMATION

Project will affect (check all that apply):

☐ Lake, Watercourse, or Public Water   ☐ Non-Public Waters Wetland   ☐ Wetland of Unknown Jurisdiction

Address: \_\_\_\_\_  
City/Town/Village: \_\_\_\_\_  
County: \_\_\_\_\_  
Gov't Lot(s): \_\_\_\_\_ Quarter Section(s): \_\_\_\_\_ Section(s): \_\_\_\_\_ Township: \_\_\_\_\_ Range(s): \_\_\_\_\_  
Lot, Block, Subd: \_\_\_\_\_

Description of proposed work (include a brief description of the work and any additional pages if needed):

---

#### 2. LANDOWNER STATEMENT

I certify that, as the owner of the property listed on this form (check one):

☐ I have obtained all permits or approvals required to perform the work described above.

☐ No permits or approvals are required for this work.

Property Owner (Print Name)	Address	
Signature	Date	Phone Number and E-mail Address (Optional)



# COVID-19 Impacts to Operations

The Pope SWCD staff has continued to work through these unprecedented times. We have been following both County and Federal policies and our building remains locked. It has been a busy spring assisting customers at our newly added walk up window. I am hopeful that we will have our front door open in no time and back to business in a more normal fashion.

If you have questions or need assistance our walk up window is available 8-4 and you can call and email. All our staff are now working again in the building and we continue to provide customers with the best service.



## Surface Water Assessment Monitoring

The Pope SWCD has kicked off this year's lake and stream monitoring. Jessica Hoheisel, Pope SWCD Technician, will continue to monitor three stream sites and two lakes this year. This program is funded through the Minnesota Pollution Control Agency.

The primary objective of this program is to determine the health of lakes and streams in Minnesota. Through these grant funded efforts our SWCD will collect data on surface water quality to help identify lakes and streams that are in need of restoration or protection measures. The Pope SWCD was one of 11 local units of government selected to do this work in 2019-2020. The MPCA awarded \$430,000 total in the state for this water quality monitoring with this program.

This is the final year in this grant which started in 2019. The data is helpful as we work with landowners on implementing projects.

Pope County is also working with citizen volunteers to monitor 20 lakes this summer. This information is submitted into the MPCA's EQulS Database and is also included in our lake reports which can be found on our website at <https://popeswcd.org/programs/lakes-streams-researching-monitoring/lake-reports/>. These lake reports will be updated early this summer to include all data through 2019. If you have questions give us a call!



# Interns Hired for Research Farm

Meet Kimberly DeMorett, one of the Pope SWCD interns. Kimberly will be responsible for a couple of the plots at the Rosholt Research Farm. She will assist as needed with the other plots throughout the summer. She joins Tiffany Muellner, the second intern, at the farm for the season.

Kimberly grew up in the Glenwood area and attended St. Mary's University in Winona earning an environmental biology degree. She then joined the Peace Corps in Ecuador and assisted the community and schools on environmental awareness issues. She has lived and worked in Madison, Seattle, and Wasilla, Alaska.

Her most interesting job was working as a fisheries biologist on the Bering Sea and Gulf of Alaska. She returned to the Glenwood area to obtain a Latin American Studies degree from the University of Minnesota, Morris.

She likes living in rural Minnesota and is excited to be a part of the Pope SWCD for the summer. She has always been interested in caring for the environment to better everyone's lives.



Welcome back to Pope SWCD, Tiffany Muellner! Tiffany worked for Pope SWCD in 2019 as an intern at the Rosholt Research Farm. She has continued to assist through last fall on various projects including educational programming. We are excited to have Tiffany return to us for a second season at the farm.

Tiffany is from the Sauk Centre area and was raised on a dairy farm. She has a degree in wildlife management from the University of Minnesota Crookston. Her previous job was with the North Dakota Game and Fish Department as the Outdoor Skill Instructor.

She enjoys helping out on the family farm and doing anything in the outdoors.

## Stewardship Week was Observed April 26-May 3, 2020



***Pope SWCD typically circulates this information to around 30 churches each year. This year many churches have been meeting in an alternative format or not at all due to COVID-19. If you have an interest in learning more about Pollinators visit the website at [www.nacdnet.org/stewardship-week](http://www.nacdnet.org/stewardship-week) or contact our office at 320-634-5327.***



# UPCOMING WEBINAR

TUESDAY, JULY 7 | 7:00PM-8:00PM



**NATHAN HYLLA,  
SWCD PROJECT  
MANAGEMENT SUPERVISOR**

## Sauk Talk -

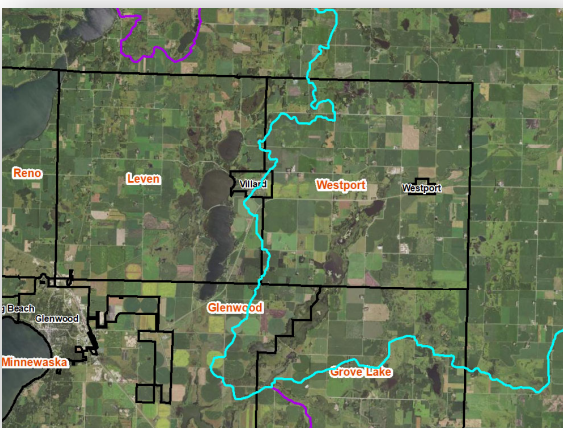
Join Nathan Hylla, SWCD Project Management Supervisor, as he will be discussing the Sauk River Easement Program. This is a Habitat Protection and Restoration Program to permanently protect high-quality habitat throughout the Sauk River Watershed.

## JOIN US VIA ZOOM



Register at:

<https://us02web.zoom.us/join/9tZfYqd-qtrToiGNFIW3UXkjkQmeWa3BA-ST4j>



*Pope County landowners located in the Sauk River Watershed are eligible for this particular program.*

*If you are located in Westport or Grove Lake Townships you may be in the Sauk River Watershed. See the map pictured left that shows the watershed area eligible.*

*Sign up to learn more about this program via this Zoom meeting information shown above.*

## PROGRAM DEADLINES

- ⇒ Conservation Reserve Enhancement Program (CREP) Batching Period June 22-August 10, 2020
- ⇒ Conservation Reserve Program (CRP) Paperwork Deadline August 21, 2020 with Farm Service Agency



It has been a busy spring with a lot of erosion and sediment control practices being installed throughout the county (examples pictured above). If you have any erosion concerns on your land give us a call 320-634-5327. We are working on applications for grant funding requests to the state in the next couple of months.

**Pope SWCD provides services including tree planting, grass seeding, mowing, and rental services. They also provide materials for seeding projects and trees. Contact the SWCD for your planting and maintenance needs. Call 320-634-5327 and ask for Kelly.**



# Walk-In Access

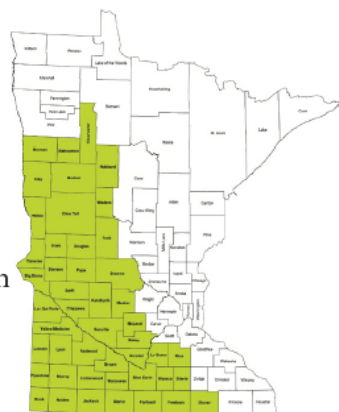
Public Hunting on Private Land



Did you know a \$3.00 Walk-In Access validation provides hunting access to nearly 30,000 acres of private land at 260 sites across Minnesota?

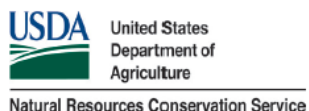
It's easy! Just ask for a Walk-In Access validation when you buy your hunting license.

Landowners, you can get compensated to enroll your high quality habitat, 40 acres or more, in WIA. Learn more at your local Soil & Water Conservation District office.



Printed atlas maps are available at locations across the 47-county WIA area after August 15, or by calling the MN DNR at 888-646-6367. Interactive maps and more program info can be found at:

[www.mndnr.gov/walkin](http://www.mndnr.gov/walkin)



Program funding includes a grant awarded by the Natural Resources Conservation Service, U.S. Department of Agriculture, under number 69-3A75-16-509; a one-time appropriation from the MN State Legislature in 2012; a \$5 surcharge on nonresident hunting licenses; and donations made by hunters purchasing hunting licenses.



**DID YOU KNOW YOU CAN FOLLOW POPE SWCD ON FACEBOOK!**



# Pope SWCD Begins City of Glenwood Stormwater Project

The Pope SWCD was awarded a grant through the Board of Water and Soil Resources (BWSR) in 2020 to work in the City of Glenwood and implement projects to address water quality concerns and stormwater impacts. This effort to implement projects in the City has been in the works for a while. In 2017, the Pope SWCD partnered with the City of Glenwood on an assessment and prioritization project, which was also funded by another BWSR Clean Water Fund grant. This effort identified contributing areas of runoff to Lake Minnewaska from within the City. The work under this grant will be from 2020-2022.

The grant will support projects that are coordinated with the City as well as individual landowner practices. Example practices include: detention ponds, ravine or gully repairs, rain gardens, and stormwater BMPs.

If you are located within the City of Glenwood and are interested in implementing a project give us a call at 320-634-5327.

This work was a goal in the water plan to improve and protect water quality to Lake Minnewaska. If you have questions or would like to set up a site visit contact Jessica Hoheisel in our office.



*Above: Eroding Ravine within City of Glenwood that will be repaired by this funding.*

*Below: WSN staff survey the ravine to prepare a design for the repair.*



## Wild Parsnip-BE ON THE LOOKOUT!

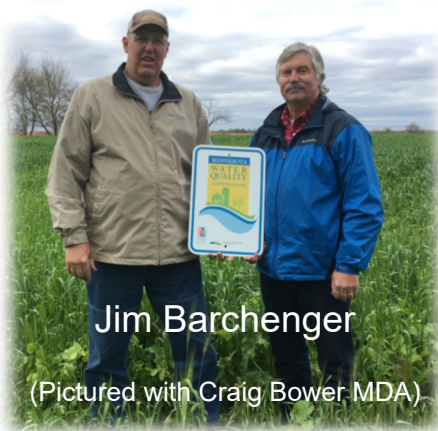
As summer progresses different yellow flowers will become more prevalent. In the beginning of the summer you notice Golden Alexander that is in bloom but is a much taller height.

Some plants reach near 4-6 feet tall! Beware of these! Wild Parsnip is a noxious weed and can be extremely harmful to people and animals due to the sap which causes burning blisters on your skin.

If you find this plant please inform the County Weed Inspector, Barry Bouwman. You can reach him at 320-634-7791 or contact our office for technical assistance.







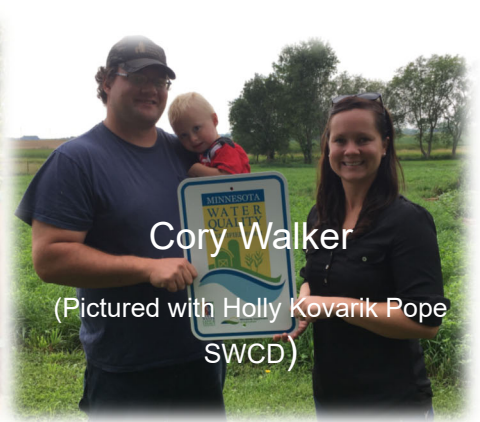
**Jim Barchenger**

(Pictured with Craig Bower MDA)



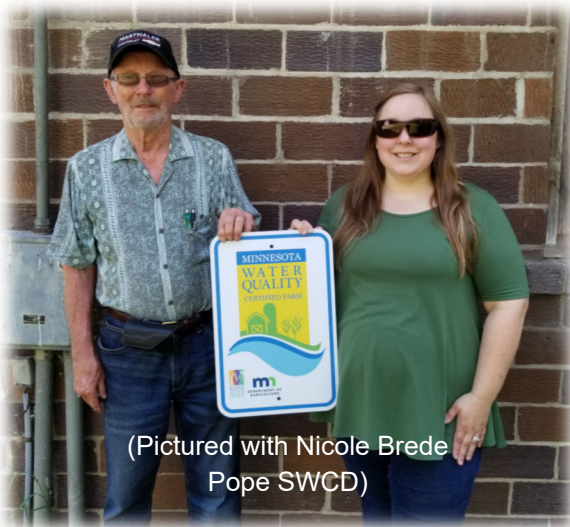
**Gary and Jane Reents**

(Pictured with Holly Kovarik Pope SWCD)



**Cory Walker**

(Pictured with Holly Kovarik Pope SWCD)



(Pictured with Nicole Brede Pope SWCD)

**David Tollefson**



(Pictured with Holly Kovarik Pope SWCD)

**Brian Banister**



**Randy Mitteness**

(Pictured with Holly Kovarik & Nicole Brede Pope SWCD)



(Pictured with Grant Pearson Stearns SWCD West Central Regional Certifier)

**Luverne and Mary Jo Forbord**

Pope SWCD in partnership with the Minnesota Department of Agriculture has certified 27 landowners through the Minnesota Ag Water Quality Certification Program. This is about 14,444 acres of land certified in Pope County. Pictured are several of our producers in the last couple of years that have been certified

## POPE SOIL & WATER



CONSERVATION DISTRICT

1680 Franklin St North  
Glenwood, MN 56334

Pope SWCD and USDA prohibits discrimination in all their programs and activities on the basis of race, color, national origin, age, disability, and where applicable, sex (including gender identity and expression), marital status, familial status, parental status, religion, sexual orientation, political beliefs, genetic information, reprisal, or because all or part of an individual's income is derived from any public assistance program.

### **In This Issue**

**Page 1:** Wetland Conservation Act Guidance

**Page 2:** COVID-19 Impacts/Surface Water Assessment Monitoring

**Page 3:** Interns/Stewardship Week

**Page 4:** Webinar Info Sauk River Easement Program/CREP and CRP Deadlines

**Page 5:** Construction Projects/ Sales Program Information/Walk In Access Program/  
Facebook

**Page 6:** City of Glenwood Stormwater Project/Wild Parsnip

**Page 7:** MDA MN Ag Water Quality Certifications

### **Important Dates**

Board Meetings are held the third  
Tuesday of each month at 7am.

The public is welcome to join us.

June 16 Board Meeting

July 21 Board Meeting

August 18 Board Meeting

September 15 Board Meeting



**2020 SWCD BOARD OF SUPERVISORS**

Keith Nygaard, Tom Talle, Randy Pederson, D. Gary Reents,  
Randy Mitteness



**SWCD STAFF**

Nicole Brede (Farmbill Technician), Holly Kovarik (Manager),  
Jessica Hoheisel (Technician), Kelly Erickson (Technician)