



Conservation News

1 6 8 0 F r a n k l i n S t r e e t N
P h o n e : (3 2 0) 6 3 4 - 5 3 2 7

G l e n w o o d , M N 5 6 3 3 4
F a x : (3 2 0) 6 3 4 - 4 2 7 8

Pope SWCD Board

Keith Nygaard
Chairman

Mike Billehus
Vice Chair

Randy Pederson
Secretary

D. Gary Reents
Public Relations

Tom Talle
Treasurer

SWCD Staff

Holly Kovarik
District Manager

Kelly Erickson
District Technician

Grant Bullmer
Farm Bill Technician

NRCS Staff

Jeff Hellermann
District Conservationist

Melissa Behrens
Soil Conservation Technician

Mary Beth Walker
Office Assistant

DU Contract Biologist

Dave Jungst

Pope County Ag Inspector

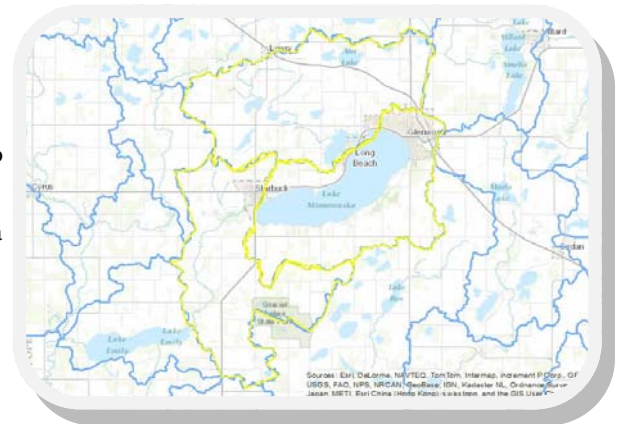
Barry Bouwman
(320) 634-5020 Office
(320) 424-0194 Cell



CLEAN WATER FUND GRANT WILL HELP WITH EROSION CONCERNS

In the spring of 2013, rain events caused severe gully erosions on the south side of Lake Minnewaska. Pope SWCD partnered with the NRCS staff to work on promotions and to gain landowner interest for projects to help with these erosion concerns.

This past fall Pope SWCD staff applied for a Clean Water Fund Grant to implement projects in three targeted subwatershed's which have been identified to help reduce the amount of sediment and phosphorus entering Pelican Lake, Lake Minnewaska, and Lake Emily. The SWCD received notice in late January that they would receive \$126,900 in funding. This funding will help to address the nutrient impairments on Pelican Lake and Lake Emily. Funding received will be able to complete around 15 projects in these areas which will help achieve goals in the County Water Plan.



SHORELINE PROJECTS CONTINUE WITH ADDITIONAL FUNDING

The Pope SWCD has been working on shoreline restoration projects in the County and will complete four projects this next spring. A grant was awarded in February of 2014 to conduct additional projects in the County. If you have lakeshore property with erosion concerns please contact our office to set up a site visit. We are hoping to do another 4 projects in 2015 and the planning stages will need to be completed in 2014. Contact Grant at 320-634-5327 or grant.bullemer@mn.nacdnet.net.

CONTRACTOR WORKSHOP SCHEDULED MARCH 28

A contractor workshop will be held on March 28, 2014 8-Noon at the Pope County Courthouse Community Room. This workshop is being held in partnership with the Pope County Land and Resource Management Office. Those that should attend include contractors and excavators. The intent of the workshop is to provide information from multiple agencies to the contractor that will be applicable to conducting work within Pope County. This is the first workshop that is being held but a workshop will be held once every two years. It will be a requirement to come to this workshop in order to be included on the contractor list which will be posted on the Pope SWCD website.

By attending this workshop you will gain valuable information and knowledge about the current federal, state, and local program requirements. This information will be helpful as you are working with local landowners on projects. You will gain insight on program and permit requirements. The goal of the workshop is to provide this information to local contractors and excavators and give them the tools to help sell conservation work in Pope County. There are several current programs through the Pope Soil and Water Conservation District and Natural Resource Conservation Service that provide cost share assistance to landowners to implement on the ground practices that help target land and water conservation projects. This is a great opportunity for our local community and for these businesses. You can find out more information on our website at www.popeswcd.org.

Irrigation Management Service Offered

Recently there has been a lot of information and attention brought forth by the Minnesota Department of Natural Resources (DNR) regarding groundwater and its sustainability.

Many of you may have attended the public meeting that was held on February 26, 2014 at the Belgrade-Brooten-Elrosa High School Auditorium. The Pope SWCD staff and some of the board members also attended this meeting. The Bonanza Valley area has been selected as a pilot in establishing a Groundwater Management Area (GWMA). The DNR has established this GWMA to help improve groundwater appropriation decisions and help groundwater users better understand and plan for future development opportunities.

So what does that mean for us here in Pope County? Almost half of the County is included in the Bonanza Valley GWMA and there has been a large increase in the number of new well permits requested. These have been primarily for new irrigation systems. A committee has been established to advise and help the DNR develop a process to address the concerns focusing on sustainability. There are more users of our groundwater resources and increased scrutiny due in part to this. This process will unfold over a year and will include multiple meetings.

The Pope SWCD Board feels very strongly about participating in these meetings and would encourage you to share your thoughts with staff or board members on this process. We plan to submit formal comments on the plan and process as it is developed. Ultimately this plan belongs to the DNR and they are the regulating agency.

The Pope SWCD plays a part in groundwater conservation implementation and education efforts. One of the groundwater programs we have been implementing is the Irrigation Scheduling Program which we have offered since 2005.

Now may be the time to add this service to your operation. This program is designed to give the producer a second opinion on in-field moisture status that can assist the producer on when to irrigate. The decision to irrigate is still the producers. The



producer will need to notify the SWCD office of weekly irrigation and rainfall amounts, emergence dates, crops planted, spraying dates, and harvesting dates. The technician from the SWCD will provide:

1. Weekly visits to check soil moisture
2. Furnish weekly computer soil moisture graphs
3. Conduct Irrigation System Uniformity checks (as needed)
4. Provide a year-end summary (graph) showing irrigation totals, rainfall amounts, and potential leaching events (This information will help with DNR Waters Year End Reporting Requirements.)

The fee is \$250 per field per year. The SWCD specializes in voluntary programs and efforts by producers and has had a proven track record of success in doing so. This Irrigation Scheduling Program provides you with an additional tool not only to document the water use that is necessary for the crop to gain the best yield but also keeps the water use and conservation of it in mind when it is possible.

Stop by our office to visit with Kelly to sign up or learn more about this program.



The Walk In Access (WIA) Program is open to land that is already enrolled in a conservation program which would allow public hunting on private land. The landowners that voluntarily choose to enroll in this program are compensated for the public hunting. WIA began in 2011 by legislation and is managed under the Department of Natural Resources. If you are interested in learning more about this program stop by the Pope SWCD and talk to Grant Bullemer to learn more.

POPE SOIL & WATER



1680 Franklin St North, Glenwood, MN 56334
 PHONE: (320) 634-5327
 FAX: (320) 634-4278
www.popeswcd.org

Name: _____
 Address: _____
 City, State Zip: _____
 Date: _____
 Day Phone: _____
 Home Phone: _____

Spring 2014 Ordering Deadline is April 1st

*Special orders available upon request, call now to secure your order! No project too big or small!
 Prices are subject to change*

ITEM	PRICE	#ORDERED	AMOUNT
SHRUBS (All Bare Root) priced per bundle of 25 Trees			
Buffaloberry	\$30.00		
Chokeberry, black	\$30.00		
Hazlenut	\$30.00		
High bush Cranberry	\$30.00		
Juneberry	\$30.00		
Nanking Cherry	\$30.00		
Cotoneaster	\$30.00		
Redosier Dogwood	\$30.00		
Sand Cherry	\$30.00		
Villosa Lilac	\$30.00		
Common Lilac	\$30.00		
LARGE TREES (All Bare Root) priced per bundle of 25 Trees			
Siouxland Cottonwood	\$30.00		
Hackberry	\$30.00		
Bur Oak	\$30.00		
Silver Maple	\$30.00		
Sugar Maple	\$30.00		
American Linden Basswood	\$30.00		
SMALL TREES (All Bare Root) priced per bundle of 25 Trees			
American Plum	\$30.00		
Common Chokecherry	\$30.00		
Red Splendor Crab	\$30.00		
EVERGREENS priced per bundle of 25 Trees			
Black Hills Spruce	\$37.50		
Colorado Blue Spruce	\$37.50		
Ponderosa Pine	\$37.50		
American Arborvitae (White Cedar)	\$37.50		
Red Pine (Norway Pine)	\$37.50		
POTTED EVERGREENS (other varieties of evergreens available upon request)			
Black Hills Spruce	\$12.00 each		
TREE CARE (Plantskydd Repellent)			
Plantskydd (deer/rabbit) Repellent (treats 200-300 1' seedlings) 1 lb powder	\$25.00		
Plantskydd (deer/rabbit) Repellent (treats 400-600 1' seedlings) 2.2 lb powder	\$37.00		
Plantskydd (deer/rabbit) Repellent (treats 100 1' seedlings) 1 liter premixed	\$20.00		

Trees Ordered: _____
 Page Total: \$ _____

****Conservation Grade Trees Must Be Ordered in Minimum Quantities of 25 unless otherwise noted.**

See Reverse Side for Tax.

POPE SOIL & WATER



CONSERVATION DISTRICT

Last Name: _____

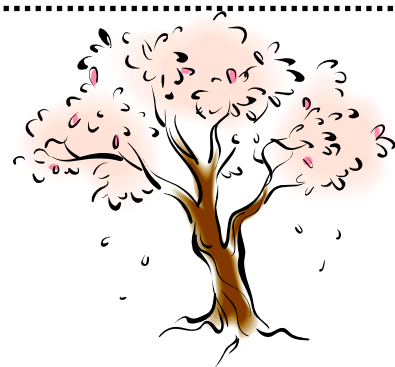
ITEM	PRICE	#ORDERED	AMOUNT
TREE CARE			
Tree Shelters 4' height (biodegradable tubes-no assembly required)	\$3.00		
Wood Stakes 4' height	\$0.90		
Weed Control Mats 3x3 w/ 4 staples	\$2.50		
Bulk Roll of Weed Fabric 500'	\$150.00		
Staples/1,000 per box (Anchor Pins)	\$70.00		
SERVICES -- All Services have a \$75.00 one time service charge			
Custom Installed Weed Fabric (fabric included in price)	\$0.50 per foot		
Custom Tree Planting (\$100 minimum charge)	\$0.50 per tree		
Custom Mowing	Call for Pricing		
Custom Cultivation	Call for Pricing		
Custom Grass Seeding ATV	Call for Pricing		
Custom Grass Seeding No-till Drill	Call for Pricing		
EQUIPMENT RENTALS (Delivery charges do apply)			
Tree Planter (minimum charge of \$50.00)	\$50.00 per day		
No-Till Drill (minimum charge of \$75.00)	\$8.00 per acre		
Packer (minimum charge of \$75.00)	\$2.50 per acre		
CUSTOM GRASS SEED MIXES (priced per acre)			
Custom mixes available upon request suited to meet program requirements. Call for a quote 320-634-5327			
*Planning and Design service with on-site visit. (FREE) *Trees sold are for conservation purposes only. *SWCD cannot guarantee survival rate of trees. *SWCD reserves the right to substitute sizes or cancel species due to availability. *A 25% down payment is required on all orders at the time of the order. All orders after March 1st 2014 must be paid in full at the time of the order. All balances due by April 1st, 2014. Orders Cancelled after February 1st, 2014 will be charged a 25% cancellation fee.		Total This Side : _____ Total Front Side : _____ Subtotal : _____ 6.875% Sales Tax : _____ Total Order Cost : _____ Paid : _____ Balance : _____	

Pope SWCD prohibits discrimination in all their programs and activities on the basis of race, color, national origin, age, disability, and where applicable, sex (including gender identity and expression), marital status, familial status, parental status, religion, sexual orientation, political beliefs, genetic information, reprisal, or because all or part of an individual's income is derived from any public assistance program.

Name _____

Date _____

ORDER BY APRIL 1st
FOR
SPRING DELIVERY



POPE SWCD PROVIDES NATIVE GRASS SEED & SEEDING

The Pope SWCD offers a complete package of services and products to aid in implementing native grass plantings enrolled in conservation programs.

Call today to set up a time to meet with staff to discuss your project and provide an estimate. Ask for Kelly!



PLANTSKYDD DEER REPELLANT AVAILABLE FOR PURCHASE



LISTED BY THE ORGANIC MATERIALS REVIEW INSTITUTE (OMRI) FOR USE IN PRODUCTION OF ORGANIC FOOD AND FIBER.



REPELS BY ODOR (NOT UNPLEASANT TO APPLICATORS)

Plantskydd is available in powder and liquid form and in a variety of quantities. This product has been quite effective when used on newly planted trees and shrubs to protect them from deer that browse on young trees. The smell of the product is what keeps the deer away. Stop in the office to purchase. We always have the product on hand.

311 BRIGHTON AVENUE, SUITE C
BUFFALO, MN 55313
PHONE: 763-682-1803, EXT. 3
FAX: 763-682-0282
WWW.CROWRIVER.ORG

Pope County Spring Rain Barrel Sale

Preserve, Protect, Restore

\$55 a barrel

Pre-order by April 4th to guarantee a rain barrel!

Key Features:
Expandable, debris screen, durable, easy assemblage, flat back, & 54 gallons

Pre-Order Today

To order contact Holly at 320-634-5327 or at holly.kovarik@mn.nacdn.net

NOW IS THE TIME TO PLAN FOR YOUR FARMSTEAD SHELTERBELT

It is not too late to plan your farmstead shelterbelt. The snow has taken a while to melt to allow site visits and to plan for planting trees and shrubs this spring. I know spring has seemed so far off with the record cold temperatures. However spring is only a couple of weeks away. Trees need to be ordered by April 1st to ensure delivery at the end of April.



Shelterbelts are a valuable resource to the farmstead. It provides protection from cold winter winds, helps with energy conservation (less fuel use), habitat for wildlife, and beautification on your farm. Call now to schedule a consultation, ask for Kelly!

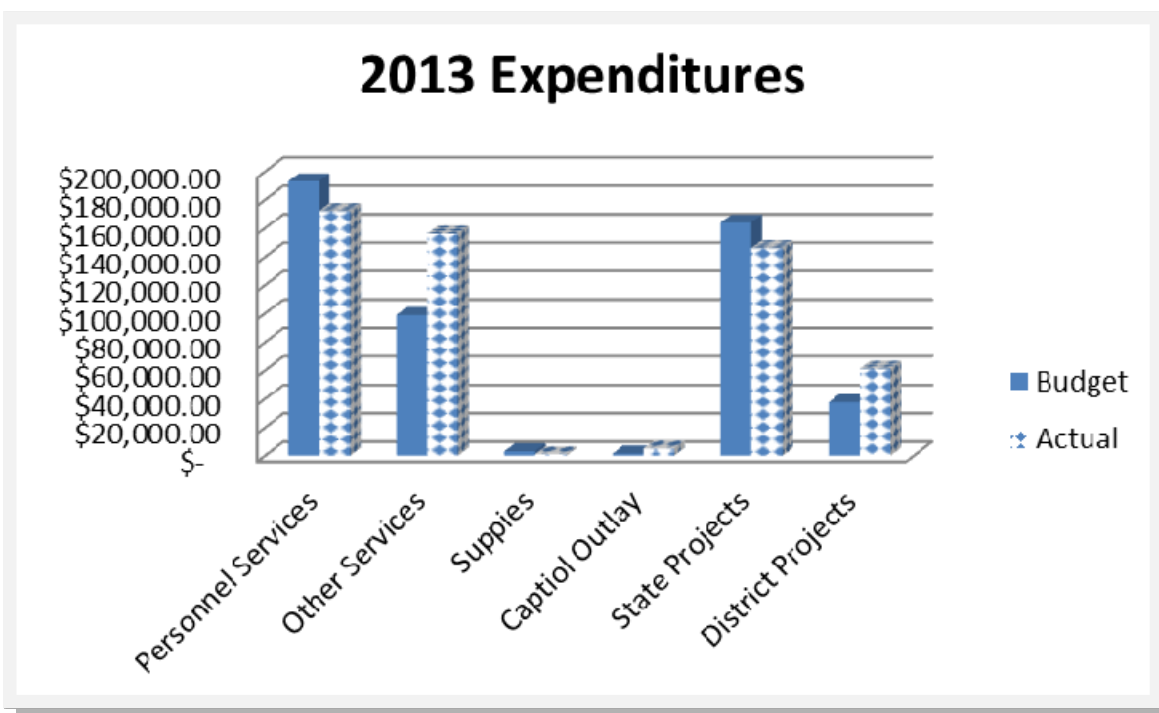
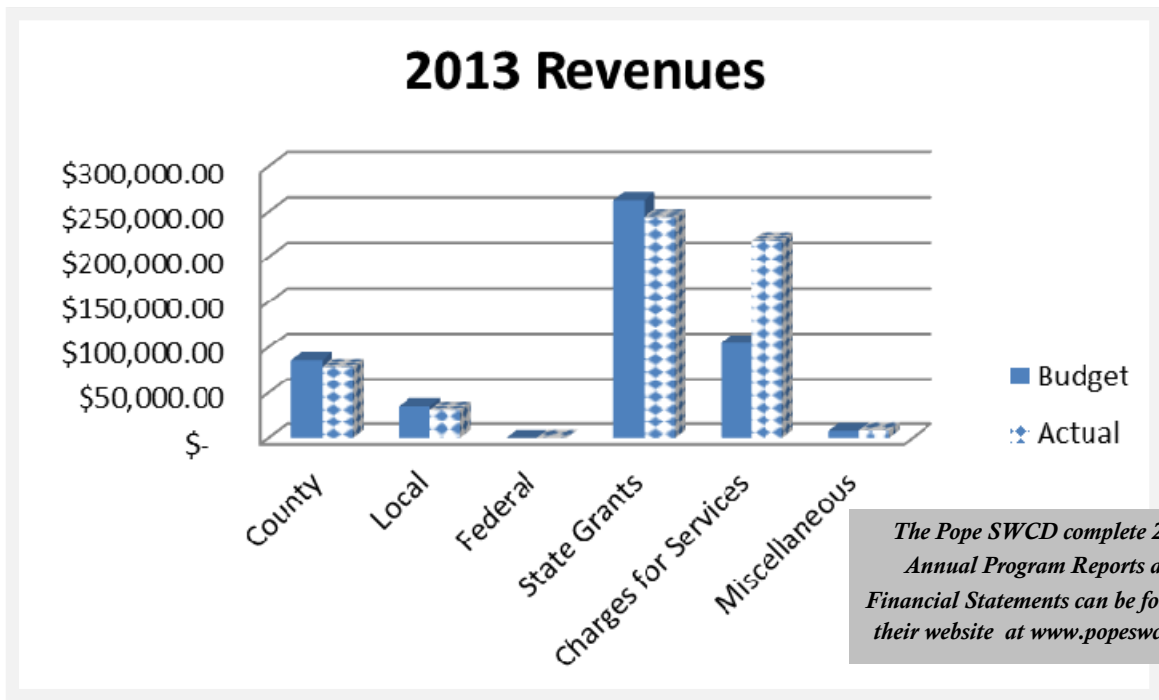
WELL SEALING

Pope SWCD is offering well sealing cost share assistance to landowners. We are encouraging landowners that have old unused wells to seal them. Sealing these wells helps to protect groundwater.

Stop by and visit with Holly to learn more about this program and how you can receive cost share assistance to seal a well.



2013 POPE SWCD ANNUAL FINANCIAL REPORT



2013 POPE SWCD ANNUAL PROGRAMS REPORT

- **State Cost Share Program**
 - ⇒ Implemented 2 Water & Sediment Control Basin Structures
 - ⇒ Designed Water & Sediment Control Basins for 3 other sites to be implemented in Spring 2014
- **Precipitation Volunteer Monitoring**
 - ⇒ Coordinated 17 volunteer monthly reports submitted to University of Minnesota.
- **Wetland Conservation Act**
 - ⇒ 88 landowner contacts, 1 replacement plan approved, 1 wetland banking plan approved, 2 violations cited, 4 site investigations with potential violations noted.
- **Observation Well Monitoring**
 - ⇒ Conducted monthly monitoring of 19 wells for the Minnesota Department of Natural Resources.
- **Irrigation Management**
 - ⇒ Conducted Irrigation Water Management for season on 2 fields.
- **Minnesota Department of Agriculture Research at Rosholt Research Farm on groundwater and Nitrates**
 - ⇒ Participated in research with MDA, Prairie Lakes Coop, and other partners to conduct research on nitrates in groundwater.
 - ⇒ Hired an intern to collect samples through suction lysimeters during the summer.
- **Clean Water Fund Accelerated Implementation Grant-Terrain Analysis of South Lake Minnewaska**
 - ⇒ Worked on completing an analysis of the sub-watershed on the south side of Lake Minnewaska to determine high priority erosion areas after a large rain event in June 2013 that caused significant problems. The information will be used by agencies to better understand the needs and to prioritize areas needing funding for implementation efforts.

- **DNR Shoreline Restoration**
 - ⇒ Designed four shoreline restorations to be implemented in 2015.
- **County Conservation Corps**
 - ⇒ Received a grant to have an additional intern on staff in the summer of 2013 to work on Cooperative Weed Management, Outreach, and other conservation work.
- **Pope County Local Water Plan**
 - ⇒ Adopted revised water plan in partnership with the County.
 - ⇒ Wrote several grants to meet goals for implementation outlined in the water plan.

- **Reinvest in Minnesota Program**
 - ⇒ 1 contract/ 134.4 acres enrolled
- **Reinvest in Minnesota/Wetland Reserve Program**
 - ⇒ 2 contracts and 137.90 Acres enrolled
- **Environmental Quality Incentive Program**
 - ⇒ 244.10 acres of No-till/Strip till
 - ⇒ 196 Acres Nutrient Management
 - ⇒ Designed & Implemented Water and Sediment Control Basin Structures
 - ⇒ Assisted NRCS with their programs for cost share on fencing, pipeline for water, well digging, and stock tanks.



- **Education Programs: Stewardship Week/Arbor Month/Poster Contest/Conservation Day/Water Fest/Area II Envirothon**
 - ⇒ Pope –Stevens County Waterfest held with approximately 300 students in attendance
 - ⇒ Pope –Stevens Conservation day held with approximately 300 students in attendance
 - ⇒ Poster Contest conducted in three schools.
 - ⇒ Stewardship Week Materials offered to churches.
 - ⇒ Assisted with Area II Envirothon.
- **Outstanding Conservationists**
 - ⇒ Dr. Bruce Brown was selected to receive Outstanding Conservationist of the Year Award for over 20 years of work on coordinating the volunteer monitoring efforts and data collection in Pope County on various lakes.
- **Conservation Reserve Program**
 - ⇒ 409 landowner contacts made resulting in 105 contracts and 2,320 acres enrolled

- **Cooperative Weed Management**
 - ⇒ Hired an intern to locate and treat terrestrial invasive plants in Pope and Swift Counties. This program has been in effect with cooperating agencies and the County Ag Inspectors since 2006.
- **Sales Program**
 - ⇒ 3 rain barrels
 - ⇒ 5 rain gauges
 - ⇒ 1,841.9 acres of grass seed
 - ⇒ 46,403 feet of weed fabric
 - ⇒ 32251 feet of installed weed fabric
 - ⇒ 8 boxes of plantskydd
 - ⇒ 40 3x3 mats
 - ⇒ 1,377 tree tubes
 - ⇒ 22,116 trees/shrubs
 - ⇒ 701 acres of drill rental
 - ⇒ 208 acres of packer rental
 - ⇒ 4,112 trees planted
 - ⇒ 434 acres custom seeding
 - ⇒ 58 acres disking
 - ⇒ 48 acres packing
 - ⇒ 245 acres of custom mowing

POPE SOIL & WATER



CONSERVATION DISTRICT

1680 Franklin St North
Glenwood, MN 56334

Pope SWCD and USDA prohibits discrimination in all their programs and activities on the basis of race, color, national origin, age, disability, and where applicable, sex (including gender identity and expression), marital status, familial status, parental status, religion, sexual orientation, political beliefs, genetic information, reprisal, or because all or part of an individual's income is derived from any public assistance program.

IN THIS ISSUE

Page 1: Clean Water Fund Grant Received, Shoreline Funding Available, Contractor Workshop Scheduled for March 28th

Page 2: Irrigation Management Program, Walk In Access Program

Page 3: 2014 Tree Order Form

Page 4: 2014 Tree Order Form

Page 5: Grass Seed & Seeding, No-Till Drill Rental, Rain Barrel Pre-Sale, Farmstead Shelterbelt Planning, Plantskydd Repellant

Page 6: Well Sealing Program, 2013 Revenues & Expenditures (Financial Statements Online)

Page 7: 2013 Annual Programs Report

IMPORTANT DATES

Board Meetings are held **the third Tuesday of each month at 7am.**
The public is welcome to join us.

March 18	SWCD Board Meeting
April 1st	Tree Shrub Orders Due
April 5th	Rain Barrel Pre-Order Due
May 20th	SWCD Board Meeting
June 17th	SWCD Board Meeting

